

Anti-CDKN1A/p21 Antibody (R1V58)

Summary

Catalog No.	RHE23501
Clone ID	R1V58
Host species	Rabbit
Tested applications	WB: 1:500-1:1000
Species reactivity	Human, Mouse
Form	Liquid
Storage buffer	0.01M PBS, pH 7.4, 0.05% BSA, 50% Glycerol, 0.05% Sodium azide.
Concentration	1 mg/ml
Purity	>95% by SDS-PAGE.
Clonality	Monoclonal
Isotype	IgG
Applications	WB
Target	CDKN1, MDA-6, Cyclin-dependent kinase inhibitor 1, CIP1, WAF1, CDKN1A, p21, PIC1, Melanoma differentiation-associated protein 6, MDA6, SDI1, CDK-interacting protein 1, CAP20
Purification	Protein A/G purified from cell culture supernatant.
Endotoxin level	Please contact with the lab for this information.
Accession	P38936

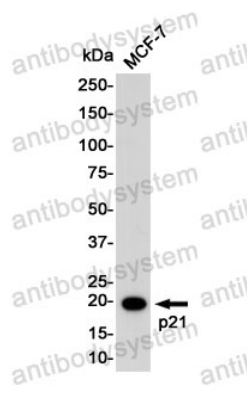
Stability and Storage

Use a manual defrost freezer and avoid repeated freeze thaw cycles. Store at 4 °C for frequent use. Store at -20 °C for twelve months from the date of receipt.

Note

For research use only.

Data Image



Western blot

Western blot analysis of p21 in MCF-7 lysates using p21 antibody.