

Anti-EIF4A3 Antibody (R1V57)

Summary

Catalog No.	RHE23301
Clone ID	R1V57
Host species	Rabbit
Tested applications	IF: 1:50-1:200, IHC: 1:50-1:100, IP: 1:20, WB: 1:500-1:1000
Species reactivity	Human, Rat, Hamster
Form	Liquid
Storage buffer	0.01M PBS, pH 7.4, 0.05% BSA, 50% Glycerol, 0.05% Sodium azide.
Concentration	1 mg/ml
Purity	>95% by SDS-PAGE.
Clonality	Monoclonal
Isotype	IgG
Applications	IF, IHC, IP, WB
Target	ATP-dependent RNA helicase eIF4A-3, eIF-4A-III, Eukaryotic translation initiation factor 4A isoform 3, Eukaryotic initiation factor 4A-like NUK-34, Nuclear matrix protein 265, hNMP 265, KIAA0111, DDX48, NMP 265, eIF4A-III, Eukaryotic initiation factor 4A-III, ATP-dependent RNA helicase DDX48, EIF4A3, DEAD box protein 48
Purification	Protein A/G purified from cell culture supernatant.
Endotoxin level	Please contact with the lab for this information.
Accession	P38919

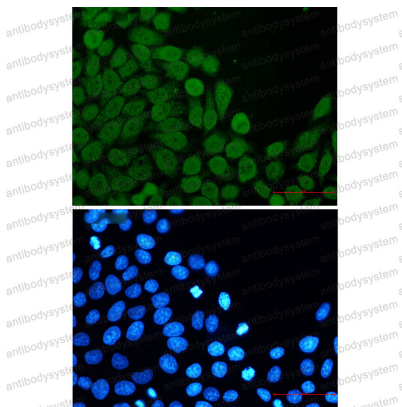
Stability and Storage

Use a manual defrost freezer and avoid repeated freeze thaw cycles. Store at 4 °C for frequent use. Store at -20 °C for twelve months from the date of receipt.

Note

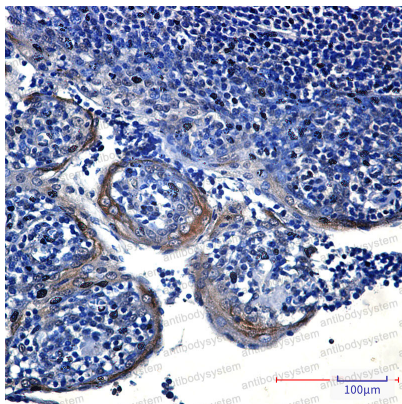
For research use only.

Data Image



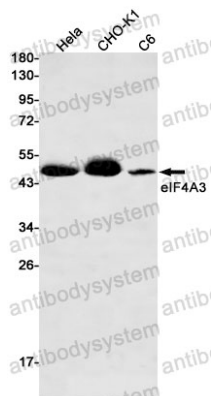
Immunofluorescence

Immunocytochemistry analysis of Eif4a3 (green) in Hela using Eif4a3 antibody, and DAPI (blue)



Immunohistochemical

Immunohistochemistry analysis of paraffin-embedded Human tonsil using Eif4a3 antibody. High-pressure and temperature Sodium Citrate pH 6.0 was used for antigen retrieval.



Western blot

Western blot analysis of eIF4A3 in HeLa, CHO-K1, C6 lysates using eIF4A3 antibody.