

Anti-EIF4A3 Antibody (R1V56)

Summary

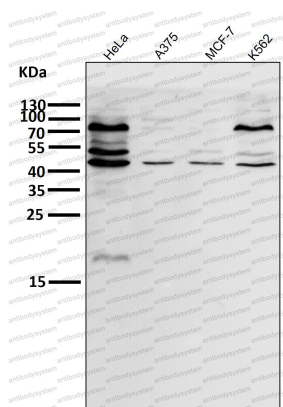
Catalog No.	RHE23302
Clone ID	R1V56
Host species	Rabbit
Tested applications	FCM: 1:20-1:100, IF: 1:50-1:200, IHC: 1:100-1:200, IP: 1:20-1:50, WB: 1:1000-1:2000
Species reactivity	Human, Mouse, Rat
Form	Liquid
Storage buffer	0.01M PBS, pH 7.4, 0.05% BSA, 50% Glycerol, 0.05% Sodium azide.
Concentration	1 mg/ml
Purity	>95% by SDS-PAGE.
Clonality	Monoclonal
Isotype	IgG
Applications	FCM, IF, IHC, IP, WB
Target	ATP-dependent RNA helicase eIF4A-3, eIF-4A-III, Eukaryotic translation initiation factor 4A isoform 3, Eukaryotic initiation factor 4A-like NUK-34, Nuclear matrix protein 265, hNMP 265, KIAA0111, DDX48, NMP 265, eIF4A-III, Eukaryotic initiation factor 4A-III, ATP-dependent RNA helicase DDX48, EIF4A3, DEAD box protein 48
Purification	Protein A/G purified from cell culture supernatant.
Endotoxin level	Please contact with the lab for this information.
Accession	P38919

Stability and Storage

Use a manual defrost freezer and avoid repeated freeze thaw cycles. Store at 4 °C for frequent use. Store at -20 °C for twelve months from the date of receipt.

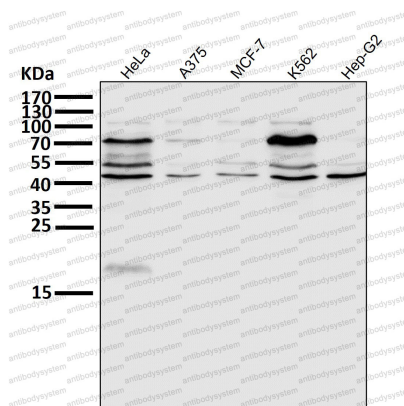
Note

For research use only.

Data Image

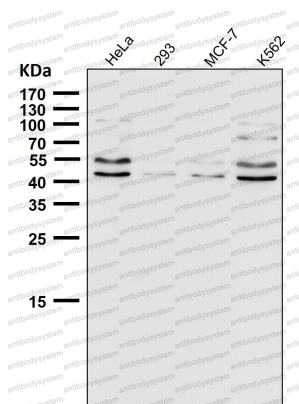
Western blot

All lanes use the Antibody at 1:1K dilution for 1 hour at room temperature.



Western blot

All lanes use the Antibody at 1:1K dilution for 1 hour at room temperature.



Western blot

All lanes use the Antibody at 1:1K dilution for 1 hour at room temperature.