

# Anti-ATP6V1A Antibody (R1V54)

## Summary

---

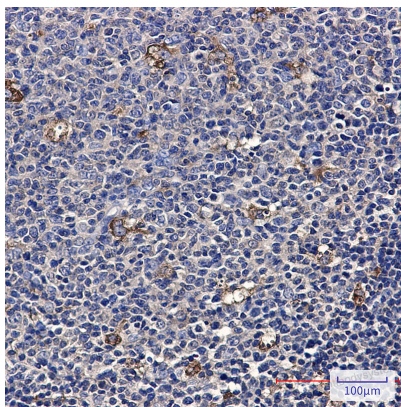
<b>Catalog No.</b>	RHE23101
<b>Clone ID</b>	R1V54
<b>Host species</b>	Rabbit
<b>Tested applications</b>	IHC: 1:50-1:100, IP: 1:20, WB: 1:500-1:1000
<b>Species reactivity</b>	Human, Mouse, Rat
<b>Form</b>	Liquid
<b>Storage buffer</b>	0.01M PBS, pH 7.4, 0.05% BSA, 50% Glycerol, 0.05% Sodium azide.
<b>Concentration</b>	1 mg/ml
<b>Purity</b>	>95% by SDS-PAGE.
<b>Clonality</b>	Monoclonal
<b>Isotype</b>	IgG
<b>Applications</b>	IHC, IP, WB
<b>Target</b>	ATP6V1A1, ATP6A1, VPP2, V-type proton ATPase catalytic subunit A, V-ATPase 69 kDa subunit, V-ATPase subunit A, ATP6V1A, Vacuolar proton pump subunit alpha, Vacuolar ATPase isoform VA68
<b>Purification</b>	Protein A/G purified from cell culture supernatant.
<b>Endotoxin level</b>	Please contact with the lab for this information.
<b>Accession</b>	P38606

**Stability and Storage**

Use a manual defrost freezer and avoid repeated freeze thaw cycles. Store at 4 °C for frequent use. Store at -20 °C for twelve months from the date of receipt.

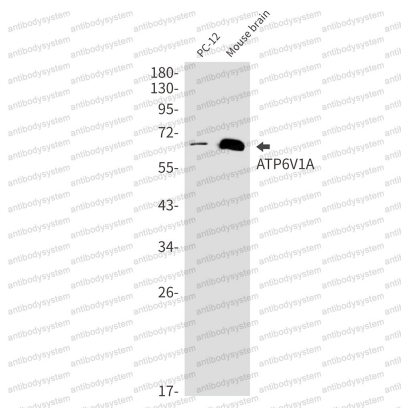
**Note**

For research use only.

**Data Image**

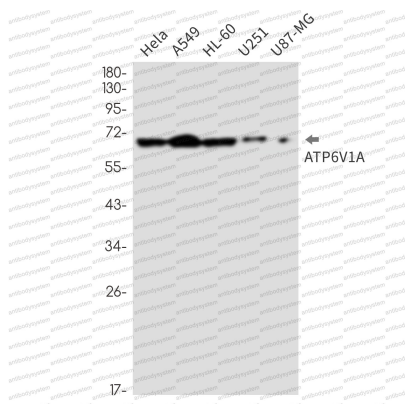
**Immunohistochemical**

Immunohistochemistry analysis of paraffin-embedded Human tonsil using ATP6V1A antibody. High-pressure and temperature Sodium Citrate pH 6.0 was used for antigen retrieval.



**Western blot**

Western blot analysis of ATP6V1A in PC-12, mouse brain lysates using ATP6V1A antibody.



Western blot

Western blot analysis of ATP6V1A in HeLa, A549, HL-60, U251, U87-MG lysates using ATP6V1A antibody.