

Anti-ATP6V1A Antibody (R1V53)

Summary

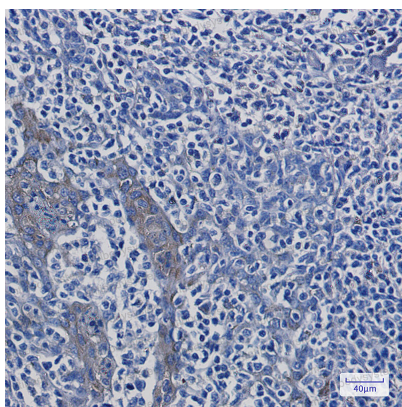
Catalog No.	RHE23102
Clone ID	R1V53
Host species	Rabbit
Tested applications	IHC: 1:50-1:100, IP: 1:20, WB: 1:500-1:1000
Species reactivity	Human, Mouse, Rat
Form	Liquid
Storage buffer	0.01M PBS, pH 7.4, 0.05% BSA, 50% Glycerol, 0.05% Sodium azide.
Concentration	1 mg/ml
Purity	>95% by SDS-PAGE.
Clonality	Monoclonal
Isotype	IgG
Applications	IHC, IP, WB
Target	ATP6V1A1, ATP6A1, VPP2, V-type proton ATPase catalytic subunit A, V-ATPase 69 kDa subunit, V-ATPase subunit A, ATP6V1A, Vacuolar proton pump subunit alpha, Vacuolar ATPase isoform VA68
Purification	Protein A/G purified from cell culture supernatant.
Endotoxin level	Please contact with the lab for this information.
Accession	P38606

Stability and Storage

Use a manual defrost freezer and avoid repeated freeze thaw cycles. Store at 4 °C for frequent use. Store at -20 °C for twelve months from the date of receipt.

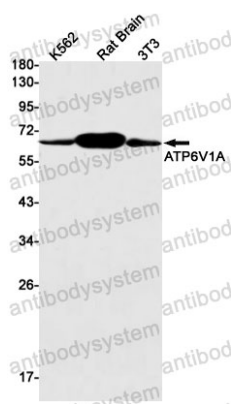
Note

For research use only.

Data Image

Immunohistochemical

Immunohistochemistry analysis of paraffin-embedded Human tonsil using ATP6V1A antibody. High-pressure and temperature Sodium Citrate pH 6.0 was used for antigen retrieval.



Western blot

Western blot analysis of ATP6V1A in K562, rat Brain, 3T3 lysates using ATP6V1A antibody.