

Anti-SNCA/Alpha-synuclein Antibody (R1V48)

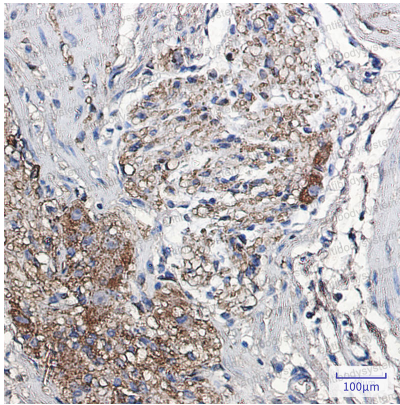
Summary

Catalog No.	RHE22003
Clone ID	R1V48
Host species	Rabbit
Tested applications	IHC: 1:50-1:100, IP: 1:20, WB: 1:500-1:1000
Species reactivity	Human, Rat
Form	Liquid
Storage buffer	0.01M PBS, pH 7.4, 0.05% BSA, 50% Glycerol, 0.05% Sodium azide.
Concentration	1 mg/ml
Purity	>95% by SDS-PAGE.
Clonality	Monoclonal
Isotype	IgG
Applications	IHC, IP, WB
Target	Alpha-synuclein, PARK1, Non-A4 component of amyloid precursor, NACP, Non-A beta component of AD amyloid, SNCA
Purification	Protein A/G purified from cell culture supernatant.
Endotoxin level	Please contact with the lab for this information.
Accession	P37840
Stability and Storage	Use a manual defrost freezer and avoid repeated freeze thaw cycles. Store at 4 °C for frequent use. Store at -20 °C for twelve months from the date of receipt.

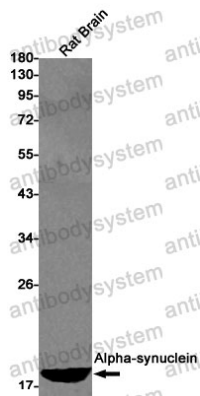
Note

For research use only.

Data Image

**Immunohistochemical**

Immunohistochemistry analysis of paraffin-embedded Human colon cancer using Alphasynuclein antibody. High-pressure and temperature Sodium Citrate pH 6.0 was used for antigen retrieval.

**Western blot**

Western blot analysis of Alphasynuclein in rat Brain lysates using alpha Synuclein antibody.