

# Anti-ACVR1B Antibody (R1V39)

## Summary

---

<b>Catalog No.</b>	RHE19302
<b>Clone ID</b>	R1V39
<b>Host species</b>	Rabbit
<b>Tested applications</b>	IF: 1:50-1:200, WB: 1:500-1:1000
<b>Species reactivity</b>	Mouse, Rat, Hamster
<b>Form</b>	Liquid
<b>Storage buffer</b>	0.01M PBS, pH 7.4, 0.05% BSA, 50% Glycerol, 0.05% Sodium azide.
<b>Concentration</b>	1 mg/ml
<b>Purity</b>	>95% by SDS-PAGE.
<b>Clonality</b>	Monoclonal
<b>Isotype</b>	IgG
<b>Applications</b>	IF, WB
<b>Target</b>	Activin receptor-like kinase 4, SKR2, ACVRLK4, ACVR1B, ALK-4, Activin receptor type IB, Activin receptor type-1B, Serine/threonine-protein kinase receptor R2, ACTR-IB, ALK4
<b>Purification</b>	Protein A/G purified from cell culture supernatant.
<b>Endotoxin level</b>	Please contact with the lab for this information.
<b>Accession</b>	P36896

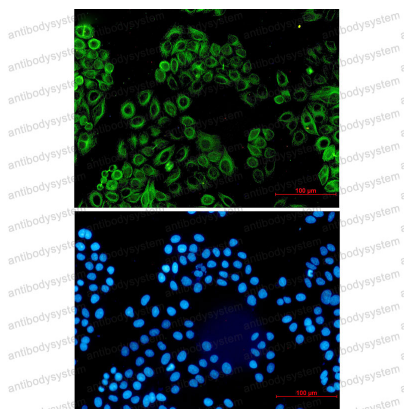
### Stability and Storage

Use a manual defrost freezer and avoid repeated freeze thaw cycles. Store at 4 °C for frequent use. Store at -20 °C for twelve months from the date of receipt.

### Note

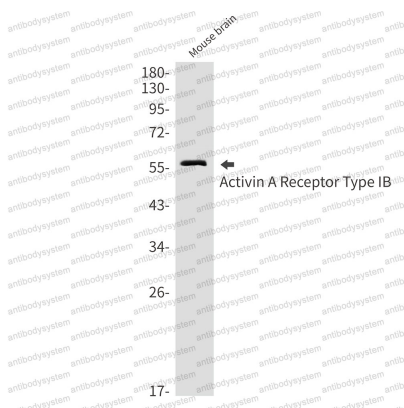
For research use only.

### Data Image



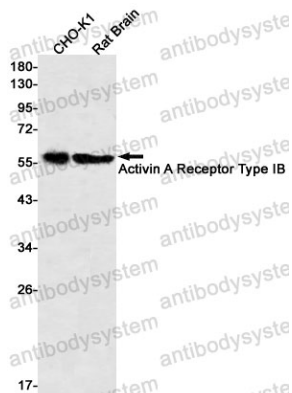
Immunofluorescence

Immunocytochemistry analysis of Activin A Receptor Type IB (green) in hela using Activin A Receptor Type IB antibody, and DAPI (blue)



Western blot

Western blot analysis of Activin A Receptor Type IB in mouse brain lysates using Activin A Receptor Type IB antibody.



Western blot

Western blot analysis of Activin A Receptor Type IB in CHO-K1, rat Brain lysates using Activin A Receptor Type IB antibody.