

Anti-ACVR1B Antibody (R1V38)

Summary

Catalog No.	RHE19304
Clone ID	R1V38
Host species	Rabbit
Tested applications	WB: 1:500-1:1000
Species reactivity	Human, Mouse, Rat
Form	Liquid
Storage buffer	0.01M PBS, pH 7.4, 0.05% BSA, 50% Glycerol, 0.05% Sodium azide.
Concentration	1 mg/ml
Purity	>95% by SDS-PAGE.
Clonality	Monoclonal
Isotype	IgG
Applications	WB
Target	Activin receptor-like kinase 4, SKR2, ACVRLK4, ACVR1B, ALK-4, Activin receptor type IB, Activin receptor type-1B, Serine/threonine-protein kinase receptor R2, ACTR-IB, ALK4
Purification	Protein A/G purified from cell culture supernatant.
Endotoxin level	Please contact with the lab for this information.
Accession	P36896

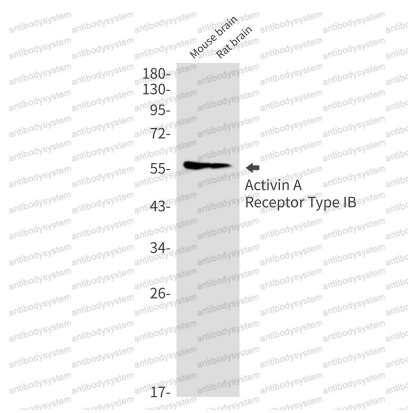
Stability and Storage

Use a manual defrost freezer and avoid repeated freeze thaw cycles. Store at 4 °C for frequent use. Store at -20 °C for twelve months from the date of receipt.

Note

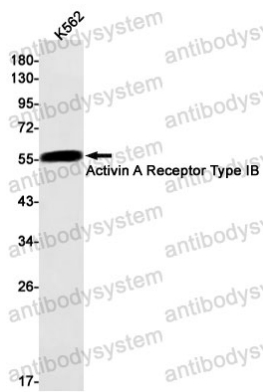
For research use only.

Data Image



Western blot

Western blot analysis of Activin A Receptor Type IB in mouse brain, rat brain lysates using Activin A Receptor Type IB antibody.



Western blot

Western blot analysis of Activin A Receptor Type IB in K562 lysates using Activin A Receptor Type IB antibody.