

Anti-ACTN2 Antibody (R1V16)

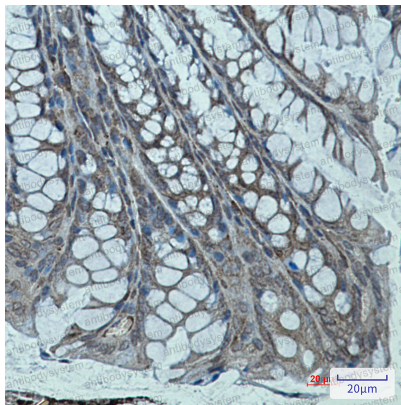
Summary

Catalog No.	RHE13601
Clone ID	R1V16
Host species	Rabbit
Tested applications	IHC: 1:50-1:100, IP: 1:20, WB: 1:500-1:1000
Species reactivity	Human, Mouse, Rat
Form	Liquid
Storage buffer	0.01M PBS, pH 7.4, 0.05% BSA, 50% Glycerol, 0.05% Sodium azide.
Concentration	1 mg/ml
Purity	>95% by SDS-PAGE.
Clonality	Monoclonal
Isotype	IgG
Applications	IHC, IP, WB
Target	ACTN2, F-actin cross-linking protein, Alpha-actinin-2, Alpha-actinin skeletal muscle isoform 2
Purification	Protein A/G purified from cell culture supernatant.
Endotoxin level	Please contact with the lab for this information.
Accession	P35609
Stability and Storage	Use a manual defrost freezer and avoid repeated freeze thaw cycles. Store at 4 °C for frequent use. Store at -20 °C for twelve months from the date of receipt.

Note

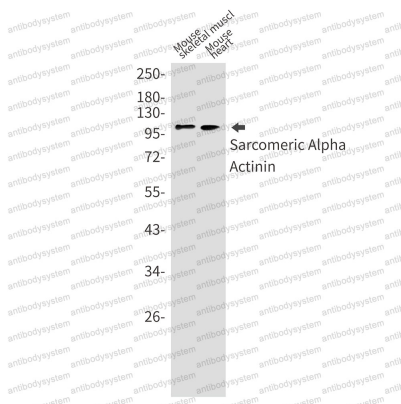
For research use only.

Data Image



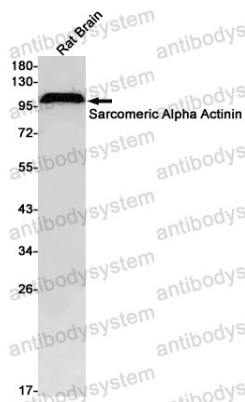
Immunohistochemical

Immunohistochemistry analysis of paraffin-embedded mouse colon using Sarcomeric alpha Actinin antibody. High-pressure and temperature Sodium Citrate pH 6.0 was used for antigen retrieval.



Western blot

Western blot analysis of Sarcomeric Alpha Actinin in mouse skeletal muscle, mouse heart lysates using Sarcomeric Alpha Actinin antibody.



Western blot

Western blot analysis of Sarcomeric Alpha Actinin in rat Brain lysates using Sarcomeric Alpha Actinin antibody