

Anti-MYH10 Antibody (R1V13)

Summary

| | |
|----------------------------|--|
| Catalog No. | RHE13301 |
| Clone ID | R1V13 |
| Host species | Rabbit |
| Tested applications | IP: 1:20, WB: 1:500-1:1000 |
| Species reactivity | Human, Mouse |
| Form | Liquid |
| Storage buffer | 0.01M PBS, pH 7.4, 0.05% BSA, 50% Glycerol, 0.05% Sodium azide. |
| Concentration | 1 mg/ml |
| Purity | >95% by SDS-PAGE. |
| Clonality | Monoclonal |
| Isotype | IgG |
| Applications | IP, WB |
| Target | NMMHC II-b, MYH10, Non-muscle myosin heavy chain IIb, NMMHC-IIb, Cellular myosin heavy chain, type B, Myosin heavy chain 10, Myosin heavy chain, non-muscle IIb, Myosin-10, Non-muscle myosin heavy chain B, NMMHC-B |
| Purification | Protein A/G purified from cell culture supernatant. |
| Endotoxin level | Please contact with the lab for this information. |
| Accession | P35580 |

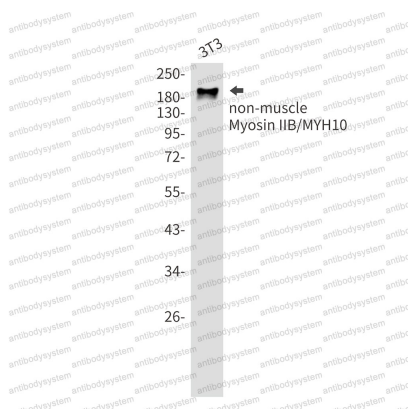
Stability and Storage

Use a manual defrost freezer and avoid repeated freeze thaw cycles. Store at 4 °C for frequent use. Store at -20 °C for twelve months from the date of receipt.

Note

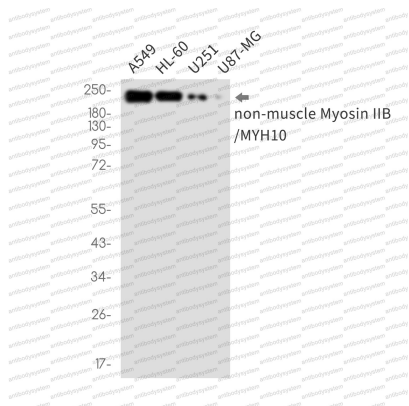
For research use only.

Data Image



Western blot

Western blot analysis of nonmuscle Myosin IIB/MYH10 in 3T3 lysates using MYH10 antibody.



Western blot

Western blot analysis of nonmuscle Myosin IIB/MYH10 in A549, HL-60, U251, U87-MG lysates using nonmuscle Myosin IIB/MYH10 antibody.