

Anti-MYH9 Antibody (R1V12)

Summary

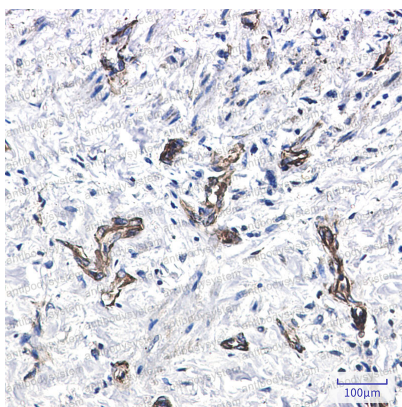
Catalog No.	RHE13202
Clone ID	R1V12
Host species	Rabbit
Tested applications	IHC: 1:50-1:100, IP: 1:20, WB: 1:500-1:1000
Species reactivity	Human, Rat
Form	Liquid
Storage buffer	0.01M PBS, pH 7.4, 0.05% BSA, 50% Glycerol, 0.05% Sodium azide.
Concentration	1 mg/ml
Purity	>95% by SDS-PAGE.
Clonality	Monoclonal
Isotype	IgG
Applications	IHC, IP, WB
Target	NMMHC-IIA, Non-muscle myosin heavy chain IIa, Cellular myosin heavy chain, type A, Myosin heavy chain 9, NMMHC II-a, Non-muscle myosin heavy chain A, Myosin-9, MYH9, NMMHC-A, Myosin heavy chain, non-muscle IIa
Purification	Protein A/G purified from cell culture supernatant.
Endotoxin level	Please contact with the lab for this information.
Accession	P35579

Stability and Storage

Use a manual defrost freezer and avoid repeated freeze thaw cycles. Store at 4 °C for frequent use. Store at -20 °C for twelve months from the date of receipt.

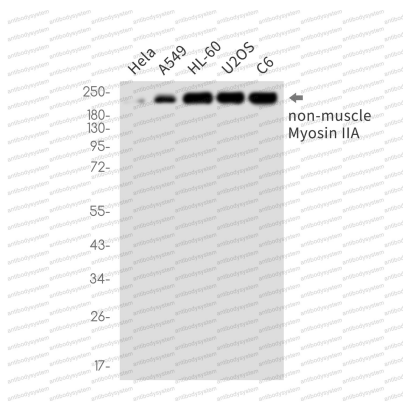
Note

For research use only.

Data Image

Immunohistochemical

Immunohistochemistry analysis of paraffin-embedded Human lung cancer using nonmuscle Myosin IIA antibody. High-pressure and temperature Sodium Citrate pH 6.0 was used for antigen retrieval.



Western blot

Western blot analysis of nonmuscle Myosin IIA in HeLa, A549, HL-60, U2OS, C6 lysates using MYH9 antibody.