

# Anti-MAS1L Antibody (R1V03)

## Summary

---

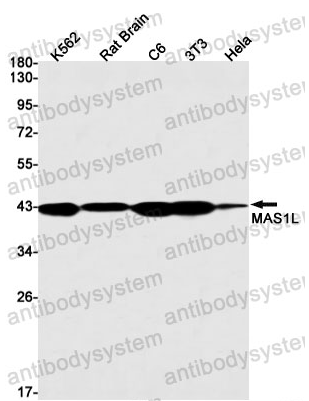
|                              |   |
|------------------------------|---|
| <b>Catalog No.</b>           | RHE10701  |
| <b>Clone ID</b>              | R1V03   |
| <b>Host species</b>          | Rabbit  |
| <b>Tested applications</b>   | IP: 1:20, WB: 1:500-1:1000  |
| <b>Species reactivity</b>    | Human, Mouse, Rat   |
| <b>Form</b>                  | Liquid  |
| <b>Storage buffer</b>        | 0.01M PBS, pH 7.4, 0.05% BSA, 50% Glycerol, 0.05% Sodium azide.   |
| <b>Concentration</b>         | 1 mg/ml   |
| <b>Purity</b>                | >95% by SDS-PAGE.   |
| <b>Clonality</b>             | Monoclonal  |
| <b>Isotype</b>               | IgG   |
| <b>Applications</b>          | IP, WB  |
| <b>Target</b>                | MRG, Mas-related G-protein coupled receptor MRG, MAS-R, MAS1-like, MAS1L  |
| <b>Purification</b>          | Protein A/G purified from cell culture supernatant.   |
| <b>Endotoxin level</b>       | Please contact with the lab for this information.   |
| <b>Accession</b>             | P35410  |
| <b>Stability and Storage</b> | Use a manual defrost freezer and avoid repeated freeze thaw cycles. Store at 4 °C for frequent use. Store at -20 °C for twelve months from the date of receipt. |

**Note**

For research use only.

## Data Image

---



Western blot

Western blot analysis of MAS1L in K562, rat Brain, C6, 3T3, HeLa lysates using MAS1L antibody.