

Anti-PTGS2 Antibody (R1V01)

Summary

Catalog No.	RHE10101
Clone ID	R1V01
Host species	Rabbit
Tested applications	IP: 1:20, WB: 1:500-1:1000
Species reactivity	Human, Mouse
Form	Liquid
Storage buffer	0.01M PBS, pH 7.4, 0.05% BSA, 50% Glycerol, 0.05% Sodium azide.
Concentration	1 mg/ml
Purity	>95% by SDS-PAGE.
Clonality	Monoclonal
Isotype	IgG
Applications	IP, WB
Target	PGH synthase 2, Prostaglandin G/H synthase 2, Cyclooxygenase-2, PTGS2, COX2, PGHS-2, PHS II, Prostaglandin-endoperoxide synthase 2, COX-2, Prostaglandin H2 synthase 2
Purification	Protein A/G purified from cell culture supernatant.
Endotoxin level	Please contact with the lab for this information.
Accession	P35354

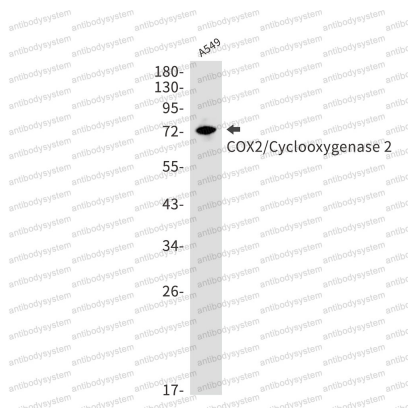
Stability and Storage

Use a manual defrost freezer and avoid repeated freeze thaw cycles. Store at 4 °C for frequent use. Store at -20 °C for twelve months from the date of receipt.

Note

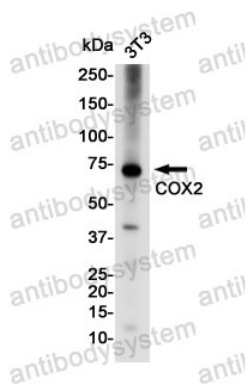
For research use only.

Data Image



Western blot

Western blot analysis of COX2/Cyclooxygenase 2 in A549 lysates using Cyclooxygenase 2 antibody.



Western blot

Western blot analysis of COX2/Cyclooxygenase 2 in 3T3 lysates using COX2/Cyclooxygenase 2 antibody.