

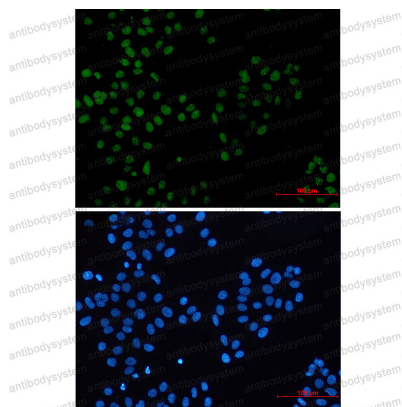
Anti-BMI1 Antibody (R1U88)

Summary

Catalog No.	RHE07801
Clone ID	R1U88
Host species	Rabbit
Tested applications	IF: 1:50-1:200, IP: 1:20, WB: 1:500-1:1000
Species reactivity	Human, Mouse, Rat
Form	Liquid
Storage buffer	0.01M PBS, pH 7.4, 0.05% BSA, 50% Glycerol, 0.05% Sodium azide.
Concentration	1 mg/ml
Purity	>95% by SDS-PAGE.
Clonality	Monoclonal
Isotype	IgG
Applications	IF, IP, WB
Target	RING finger protein 51, BMI1, RNF51, Polycomb complex protein BMI-1, Polycomb group RING finger protein 4, PCGF4
Purification	Protein A/G purified from cell culture supernatant.
Endotoxin level	Please contact with the lab for this information.
Accession	P35226
Stability and Storage	Use a manual defrost freezer and avoid repeated freeze thaw cycles. Store at 4 °C for frequent use. Store at -20 °C for twelve months from the date of receipt.

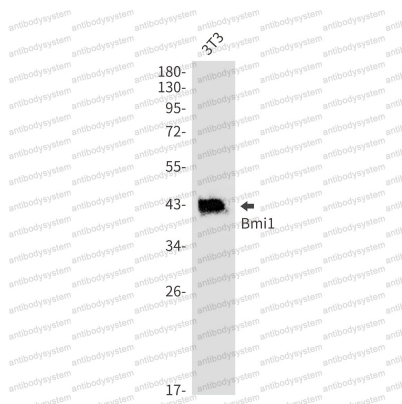
Note For research use only.

Data Image



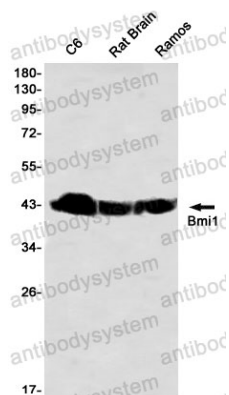
Immunofluorescence

Immunocytochemistry analysis of BMI1 (green) in Hela using BMI1 antibody, and DAPI(blue).



Western blot

Western blot analysis of Bmi1 in 3T3 lysates using Bmi1 antibody.



Western blot

Western blot analysis of Bmi1 in C6, rat Brain, Ramos lysates using Bmi1 antibody