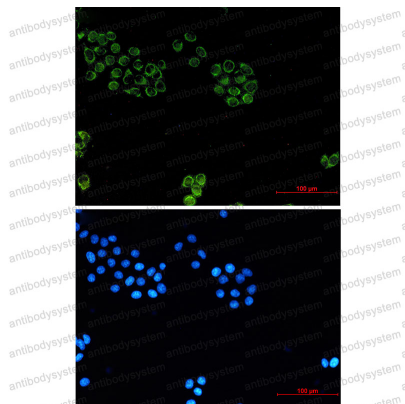


Anti-GPC1 Antibody (R1U83)

Summary

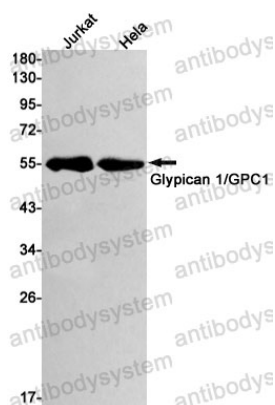
Catalog No.	RHE06801
Clone ID	R1U83
Host species	Rabbit
Tested applications	IF: 1:50-1:200, WB: 1:500-1:1000
Species reactivity	Human
Form	Liquid
Storage buffer	0.01M PBS, pH 7.4, 0.05% BSA, 50% Glycerol, 0.05% Sodium azide.
Concentration	1 mg/ml
Purity	>95% by SDS-PAGE.
Clonality	Monoclonal
Isotype	IgG
Applications	IF, WB
Target	Glypican-1, GPC1
Purification	Protein A/G purified from cell culture supernatant.
Endotoxin level	Please contact with the lab for this information.
Accession	P35052
Stability and Storage	Use a manual defrost freezer and avoid repeated freeze thaw cycles. Store at 4 °C for frequent use. Store at -20 °C for twelve months from the date of receipt.
Note	For research use only.

Data Image



Immunofluorescence

Immunocytochemistry analysis of Glypican 1/GPC1 (green) in Hela using Glypican 1/GPC1 antibody, and DAPI(blue)



Western blot

Western blot analysis of Glypican 1/GPC1 in Jurkat, Hela lysates using Glypican 1 antibody.