

# Anti-EPHX2 Antibody (R1U79)

## Summary

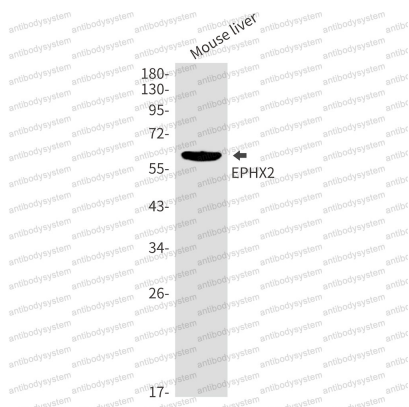
---

<b>Catalog No.</b>	RHE05503
<b>Clone ID</b>	R1U79
<b>Host species</b>	Rabbit
<b>Tested applications</b>	WB: 1:500-1:1000
<b>Species reactivity</b>	Human, Mouse
<b>Form</b>	Liquid
<b>Storage buffer</b>	0.01M PBS, pH 7.4, 0.05% BSA, 50% Glycerol, 0.05% Sodium azide.
<b>Concentration</b>	1 mg/ml
<b>Purity</b>	>95% by SDS-PAGE.
<b>Clonality</b>	Monoclonal
<b>Isotype</b>	IgG
<b>Applications</b>	WB
<b>Target</b>	Epoxide hydratase, CEH, Bifunctional epoxide hydrolase 2, EPHX2, SEH, Soluble epoxide hydrolase
<b>Purification</b>	Protein A/G purified from cell culture supernatant.
<b>Endotoxin level</b>	Please contact with the lab for this information.
<b>Accession</b>	P34913
<b>Stability and Storage</b>	Use a manual defrost freezer and avoid repeated freeze thaw cycles. Store at 4 °C for frequent use. Store at -20 °C for twelve months from the date of receipt.

**Note**

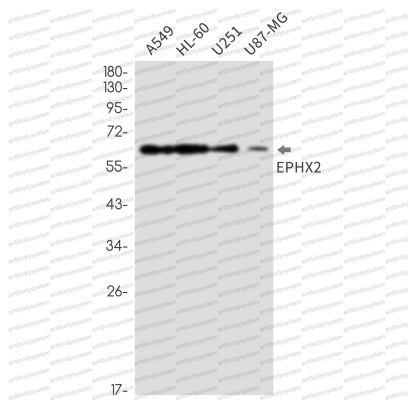
For research use only.

## Data Image



Western blot

Western blot analysis of EPHX2 in mouse liver lysates using Epoxide Hydrolase 1 antibody.



Western blot

Western blot analysis of EPHX2 in A549, HL-60, U251, U87-MG lysates using EPHX2 antibody.