

# Anti-KIF5B Antibody (R1U65)

## Summary

---

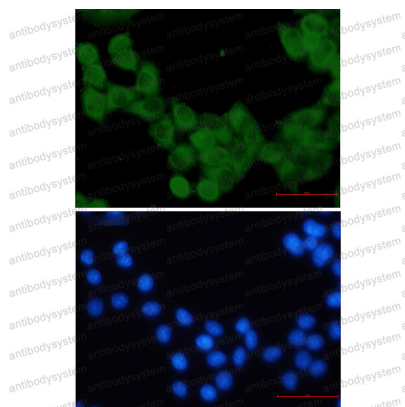
<b>Catalog No.</b>	RHE02501
<b>Clone ID</b>	R1U65
<b>Host species</b>	Rabbit
<b>Tested applications</b>	IF: 1:50-1:200, IHC: 1:50-1:100, IP: 1:20, WB: 1:500-1:1000
<b>Species reactivity</b>	Human, Mouse, Rat
<b>Form</b>	Liquid
<b>Storage buffer</b>	0.01M PBS, pH 7.4, 0.05% BSA, 50% Glycerol, 0.05% Sodium azide.
<b>Concentration</b>	1 mg/ml
<b>Purity</b>	>95% by SDS-PAGE.
<b>Clonality</b>	Monoclonal
<b>Isotype</b>	IgG
<b>Applications</b>	IF, IHC, IP, WB
<b>Target</b>	KNS, UKHC, KNS1, Conventional kinesin heavy chain, KIF5B, Ubiquitous kinesin heavy chain, Kinesin-1 heavy chain
<b>Purification</b>	Protein A/G purified from cell culture supernatant.
<b>Endotoxin level</b>	Please contact with the lab for this information.
<b>Accession</b>	P33176
<b>Stability and Storage</b>	Use a manual defrost freezer and avoid repeated freeze thaw cycles. Store at 4 °C for frequent use. Store at -20 °C for twelve months from the date of receipt.

**Note**

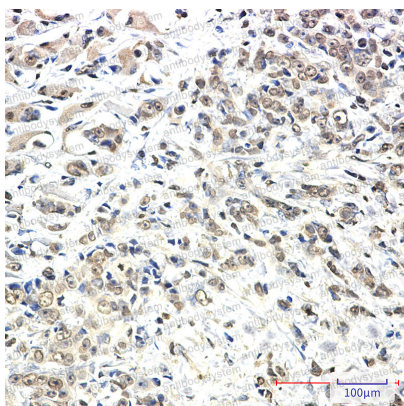
For research use only.

**Data Image**

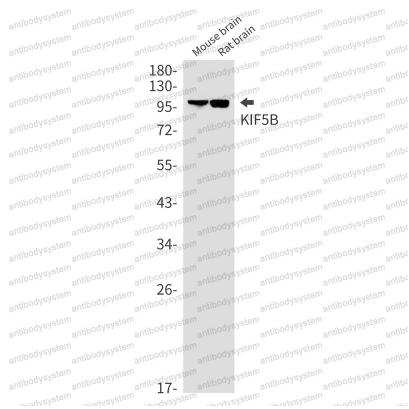
---

**Immunofluorescence**

Immunocytochemistry analysis of KIF5B (green) in Hela using KIF5B antibody, and DAPI (blue).

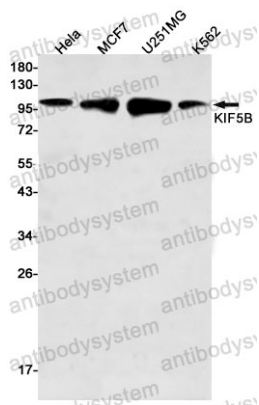
**Immunohistochemical**

Immunohistochemistry analysis of paraffin-embedded Human breast cancer using KIF5B antibody. High-pressure and temperature Sodium Citrate pH 6.0 was used for antigen retrieval.



Western blot

Western blot analysis of KIF5B in mouse brain, rat brain lysates using KIF5B antibody.



Western blot

Western blot analysis of KIF5B in HeLa, MCF-7, U251MG, K562 lysates using KIF5B antibody.