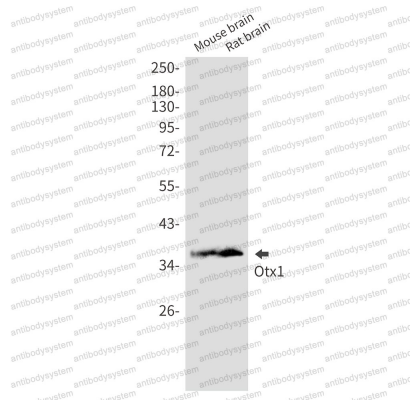


Anti-OTX1 Antibody (R1U47)

Summary

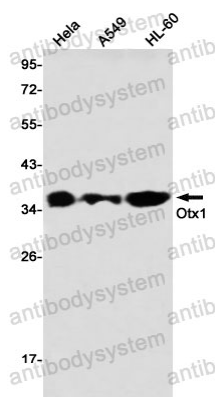
Catalog No.	RHD99003
Clone ID	R1U47
Host species	Rabbit
Tested applications	WB: 1:500-1:1000
Species reactivity	Human, Mouse, Rat
Form	Liquid
Storage buffer	0.01M PBS, pH 7.4, 0.05% BSA, 50% Glycerol, 0.05% Sodium azide.
Concentration	1 mg/ml
Purity	>95% by SDS-PAGE.
Clonality	Monoclonal
Isotype	IgG
Applications	WB
Target	OTX1, Homeobox protein OTX1, Orthodenticle homolog 1
Purification	Protein A/G purified from cell culture supernatant.
Endotoxin level	Please contact with the lab for this information.
Accession	P32242
Stability and Storage	Use a manual defrost freezer and avoid repeated freeze thaw cycles. Store at 4 °C for frequent use. Store at -20 °C for twelve months from the date of receipt.
Note	For research use only.

Data Image



Western blot

Western blot analysis of Otx1 in mouse brain, rat brain lysates using OTX1 antibody.



Western blot

Western blot analysis of Otx1 in HeLa, A549, HL-60 lysates using Otx1 antibody.