

# Anti-STIP1 Antibody (R1U39)

## Summary

---

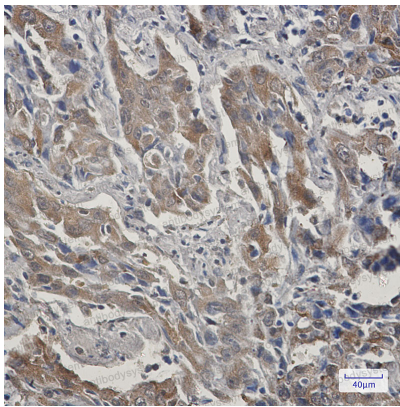
<b>Catalog No.</b>	RHD97701
<b>Clone ID</b>	R1U39
<b>Host species</b>	Rabbit
<b>Tested applications</b>	IHC: 1:50-1:100, IP: 1:20, WB: 1:500-1:1000
<b>Species reactivity</b>	Human, Mouse, Rat
<b>Form</b>	Liquid
<b>Storage buffer</b>	0.01M PBS, pH 7.4, 0.05% BSA, 50% Glycerol, 0.05% Sodium azide.
<b>Concentration</b>	1 mg/ml
<b>Purity</b>	>95% by SDS-PAGE.
<b>Clonality</b>	Monoclonal
<b>Isotype</b>	IgG
<b>Applications</b>	IHC, IP, WB
<b>Target</b>	Hop, Transformation-sensitive protein IEF SSP 3521, Hsc70/Hsp90-organizing protein, Renal carcinoma antigen NY-REN-11, Stress-induced-phosphoprotein 1, STI1, STIP1
<b>Purification</b>	Protein A/G purified from cell culture supernatant.
<b>Endotoxin level</b>	Please contact with the lab for this information.
<b>Accession</b>	P31948

**Stability and Storage**

Use a manual defrost freezer and avoid repeated freeze thaw cycles. Store at 4 °C for frequent use. Store at -20 °C for twelve months from the date of receipt.

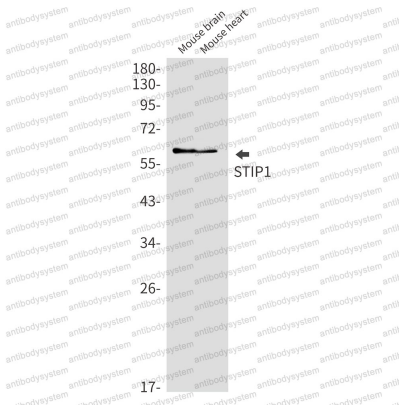
**Note**

For research use only.

**Data Image**

**Immunohistochemical**

Immunohistochemistry analysis of paraffin-embedded Human lung cancer using STIP1 antibody. High-pressure and temperature Sodium Citrate pH 6.0 was used for antigen retrieval.



**Western blot**

Western blot analysis of STIP1 in mouse brain, mouse heart lysates using STIP1 antibody.



Western blot

Western blot analysis of STIP1 in K562, rat Brain, C6 lysates using STIP1 antibody.