

Anti-YWHAB Antibody (R1U33)

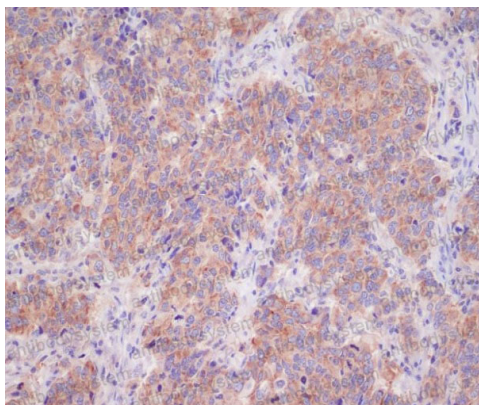
Summary

Catalog No.	RHD97504
Clone ID	R1U33
Host species	Rabbit
Tested applications	FCM: 1:20-1:100, IHC: 1:100-1:200, WB: 1:1000-1:2000
Species reactivity	Human, Mouse, Rat
Form	Liquid
Storage buffer	0.01M PBS, pH 7.4, 0.05% BSA, 50% Glycerol, 0.05% Sodium azide.
Concentration	1 mg/ml
Purity	>95% by SDS-PAGE.
Clonality	Monoclonal
Isotype	IgG
Applications	FCM, IHC, WB
Target	YWHAB, Protein 1054, 14-3-3 protein beta/alpha, KCIP-1, Protein kinase C inhibitor protein 1
Purification	Protein A/G purified from cell culture supernatant.
Endotoxin level	Please contact with the lab for this information.
Accession	P31946, P63104
Stability and Storage	Use a manual defrost freezer and avoid repeated freeze thaw cycles. Store at 4 °C for frequent use. Store at -20 °C for twelve months from the date of receipt.

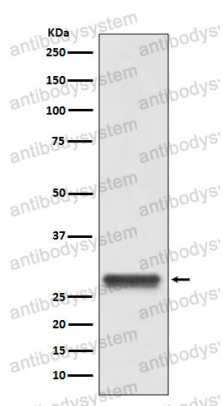
Note

For research use only.

Data Image

**Immunohistochemical**

Immunohistochemical analysis of paraffin-embedded human breast cancer, using 14-3-3 Antibody.

**Western blot**

Western blot analysis of 14-3-3 expression in HeLa lysate.