

Anti-CD52 Antibody (R1U22)

Summary

Catalog No.	RMD95101
Clone ID	R1U22
Host species	Rabbit
Tested applications	IP: 1:20-1:50, WB: 1:1000-1:2000
Species reactivity	Mouse
Form	Liquid
Storage buffer	0.01M PBS, pH 7.4, 0.05% BSA, 50% Glycerol, 0.05% Sodium azide.
Concentration	1 mg/ml
Purity	>95% by SDS-PAGE.
Clonality	Monoclonal
Isotype	IgG
Applications	IP, WB
Target	Human epididymis-specific protein 5, CDW52, CAMPATH-1 antigen, Cambridge pathology 1 antigen, He5, HE5, Epididymal secretory protein E5, CD52, CDw52
Purification	Protein A/G purified from cell culture supernatant.
Endotoxin level	Please contact with the lab for this information.
Accession	Q64389, P31358

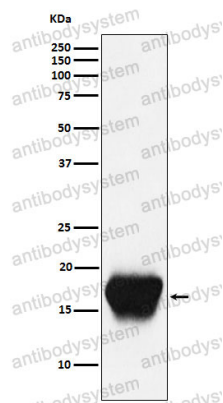
Stability and Storage

Use a manual defrost freezer and avoid repeated freeze thaw cycles. Store at 4 °C for frequent use. Store at -20 °C for twelve months from the date of receipt.

Note

For research use only.

Data Image



Western blot

Western blot analysis of CD52 expression in Mouse spleen cell lysate.