

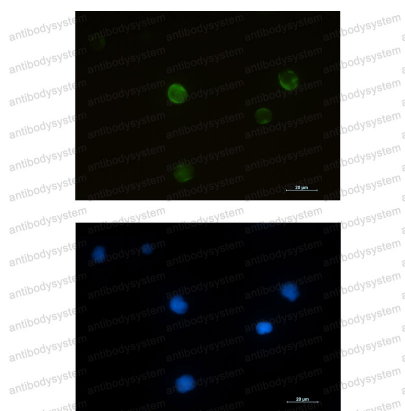
Anti-RRM2 Antibody (R1U21)

Summary

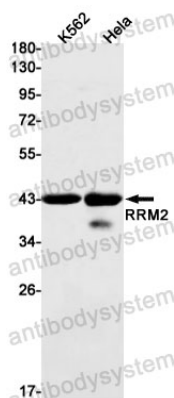
Catalog No.	RHD95001
Clone ID	R1U21
Host species	Rabbit
Tested applications	IF: 1:50-1:200, IP: 1:20, WB: 1:500-1:1000
Species reactivity	Human
Form	Liquid
Storage buffer	0.01M PBS, pH 7.4, 0.05% BSA, 50% Glycerol, 0.05% Sodium azide.
Concentration	1 mg/ml
Purity	>95% by SDS-PAGE.
Clonality	Monoclonal
Isotype	IgG
Applications	IF, IP, WB
Target	RR2, Ribonucleotide reductase small chain, Ribonucleotide reductase small subunit, Ribonucleoside-diphosphate reductase subunit M2, RRM2
Purification	Protein A/G purified from cell culture supernatant.
Endotoxin level	Please contact with the lab for this information.
Accession	P31350
Stability and Storage	Use a manual defrost freezer and avoid repeated freeze thaw cycles. Store at 4 °C for frequent use. Store at -20 °C for twelve months from the date of receipt.

Note

For research use only.

Data Image**Immunofluorescence**

Immunocytochemistry analysis of RRM2 (green) in Jurkat using RRM2 antibody, and DAPI(blue).

**Western blot**

Western blot analysis of RRM2 in K562, HeLa lysates using RRM2 antibody.