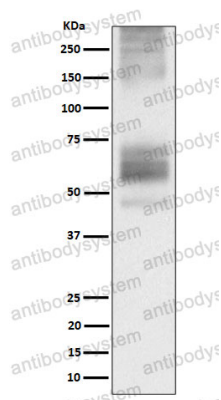


Anti-SSTR1 Antibody (R1U11)

Summary

Catalog No.	RHD91501
Clone ID	R1U11
Host species	Rabbit
Tested applications	IF: 1:50-1:200, WB: 1:1000-1:2000
Species reactivity	Human
Form	Liquid
Storage buffer	0.01M PBS, pH 7.4, 0.05% BSA, 50% Glycerol, 0.05% Sodium azide.
Concentration	1 mg/ml
Purity	>95% by SDS-PAGE.
Clonality	Monoclonal
Isotype	IgG
Applications	IF, WB
Target	SS1R, SRIF-2, Somatostatin receptor type 1, SS1-R, SSTR1, SS-1-R
Purification	Protein A/G purified from cell culture supernatant.
Endotoxin level	Please contact with the lab for this information.
Accession	P30872
Stability and Storage	Use a manual defrost freezer and avoid repeated freeze thaw cycles. Store at 4 °C for frequent use. Store at -20 °C for twelve months from the date of receipt.
Note	For research use only.

Data Image



Western blot

Western blot analysis of Somatostatin Receptor 1 expression in 293T transfected with Somatostatin Receptor 1 cell lysate.