

Anti-Cdc27/APC3 Antibody (R1T93)

Summary

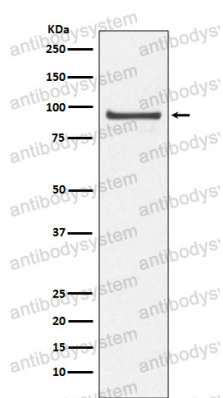
Catalog No.	RHD87701
Clone ID	R1T93
Host species	Rabbit
Tested applications	WB: 1:1000-1:2000
Species reactivity	Human, Mouse, Rat
Form	Liquid
Storage buffer	0.01M PBS, pH 7.4, 0.05% BSA, 50% Glycerol, 0.05% Sodium azide.
Concentration	1 mg/ml
Purity	>95% by SDS-PAGE.
Clonality	Monoclonal
Isotype	IgG
Applications	WB
Target	ANAPC3, Cell division cycle protein 27 homolog, CDC27, APC3, Anaphase-promoting complex subunit 3, CDC27Hs, D0S1430E, CDC27 homolog, D17S978E, H-NUC
Purification	Protein A/G purified from cell culture supernatant.
Endotoxin level	Please contact with the lab for this information.
Accession	P30260

Stability and Storage

Use a manual defrost freezer and avoid repeated freeze thaw cycles. Store at 4 °C for frequent use. Store at -20 °C for twelve months from the date of receipt.

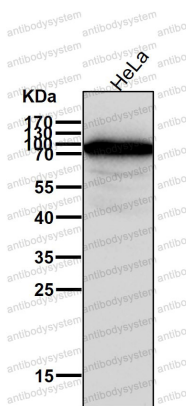
Note

For research use only.

Data Image

Western blot

Western blot analysis of Cdc27/APC3 expression in 293T cell lysate.



Western blot

All lanes use the Antibody at 1:2K dilution for 1 hour at room temperature.