

# Anti-PRDX6 Antibody (R1T85)

## Summary

---

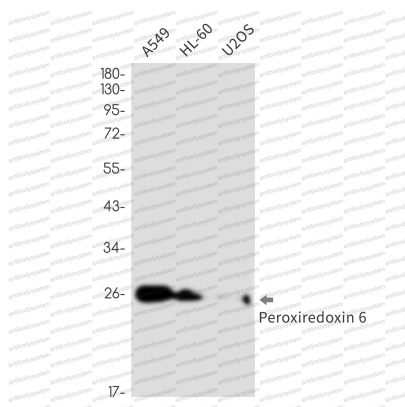
<b>Catalog No.</b>	RHD86203
<b>Clone ID</b>	R1T85
<b>Host species</b>	Rabbit
<b>Tested applications</b>	IP: 1:20, WB: 1:500-1:1000
<b>Species reactivity</b>	Human
<b>Form</b>	Liquid
<b>Storage buffer</b>	0.01M PBS, pH 7.4, 0.05% BSA, 50% Glycerol, 0.05% Sodium azide.
<b>Concentration</b>	1 mg/ml
<b>Purity</b>	>95% by SDS-PAGE.
<b>Clonality</b>	Monoclonal
<b>Isotype</b>	IgG
<b>Applications</b>	IP, WB
<b>Target</b>	24 kDa protein, Lysophosphatidylcholine acyltransferase 5, Acidic calcium-independent phospholipase A2, KIAA0106, LPCAT-5, 1-Cys PRX, Antioxidant protein 2, LPC acyltransferase 5, aiPLA2, Non-selenium glutathione peroxidase, Lyso-PC acyltransferase 5, PRDX6, AOP2, Glutathione-dependent peroxiredoxin, Peroxiredoxin-6, NSGPx, Red blood cells page spot 12, 1-Cys peroxiredoxin, Liver 2D page spot 40
<b>Purification</b>	Protein A/G purified from cell culture supernatant.
<b>Endotoxin level</b>	Please contact with the lab for this information.
<b>Accession</b>	P30041

**Stability and Storage**

Use a manual defrost freezer and avoid repeated freeze thaw cycles. Store at 4 °C for frequent use. Store at -20 °C for twelve months from the date of receipt.

**Note**

For research use only.

**Data Image**

Western blot

Western blot analysis of Peroxiredoxin 6 in A549, HL-60, U2OS lysates using Peroxiredoxin 6 antibody.