

Anti-KDM5A Antibody (R1T69)

Summary

Catalog No.	RHD83401
Clone ID	R1T69
Host species	Rabbit
Tested applications	FCM: 1:20-1:100, IF: 1:50-1:200, IP: 1:20-1:50, WB: 1:1000-1:2000
Species reactivity	Human, Mouse
Form	Liquid
Storage buffer	0.01M PBS, pH 7.4, 0.05% BSA, 50% Glycerol, 0.05% Sodium azide.
Concentration	1 mg/ml
Purity	>95% by SDS-PAGE.
Clonality	Monoclonal
Isotype	IgG
Applications	FCM, IF, IP, WB
Target	RBBP-2, RBBP2, JARID1A, [histone H3]-trimethyl-L-lysine(4) demethylase 5A, RBP2, KDM5A, Lysine-specific demethylase 5A, Histone demethylase JARID1A, Retinoblastoma-binding protein 2, Jumonji/ARID domain-containing protein 1A
Purification	Protein A/G purified from cell culture supernatant.
Endotoxin level	Please contact with the lab for this information.
Accession	P29375

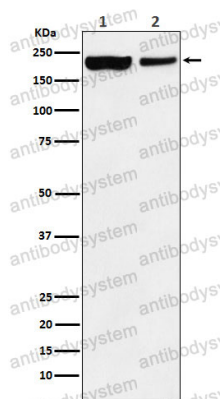
Stability and Storage

Use a manual defrost freezer and avoid repeated freeze thaw cycles. Store at 4 °C for frequent use. Store at -20 °C for twelve months from the date of receipt.

Note

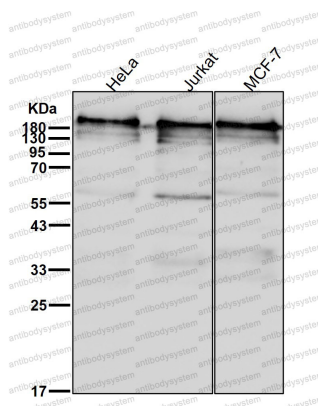
For research use only.

Data Image



Western blot

Western blot analysis of KDM5A / Jarid1A / RBBP2 expression in (1) HEK293 cell lysate; (2) Mouse spleen lysate.



Western blot

All lanes use the Antibody at 1:2K dilution for 1 hour at room temperature.