

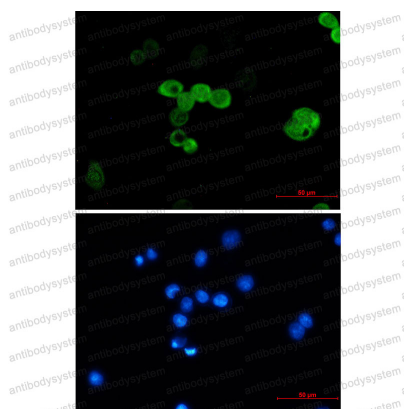
Anti-CRABP2 Antibody (R1T68)

Summary

Catalog No.	RHD83201
Clone ID	R1T68
Host species	Rabbit
Tested applications	IF: 1:50-1:200, WB: 1:500-1:1000
Species reactivity	Human
Form	Liquid
Storage buffer	0.01M PBS, pH 7.4, 0.05% BSA, 50% Glycerol, 0.05% Sodium azide.
Concentration	1 mg/ml
Purity	>95% by SDS-PAGE.
Clonality	Monoclonal
Isotype	IgG
Applications	IF, WB
Target	CRABP-II, Cellular retinoic acid-binding protein II, CRABP2, Cellular retinoic acid-binding protein 2
Purification	Protein A/G purified from cell culture supernatant.
Endotoxin level	Please contact with the lab for this information.
Accession	P29373
Stability and Storage	Use a manual defrost freezer and avoid repeated freeze thaw cycles. Store at 4 °C for frequent use. Store at -20 °C for twelve months from the date of receipt.

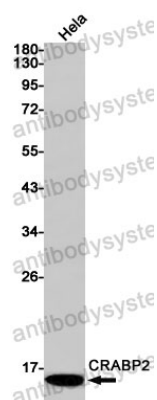
Note For research use only.

Data Image



Immunohistochemical

Immunocytochemistry analysis of CRABP2 (green) in MCF-7 using CRABP2 antibody, and DAPI (blue)



Western blot

Western blot analysis of CRABP2 in HeLa lysates using CRABP2 antibody.