

# Anti-PTPN6 Antibody (R1T66)

## Summary

---

<b>Catalog No.</b>	RHD82801
<b>Clone ID</b>	R1T66
<b>Host species</b>	Rabbit
<b>Tested applications</b>	WB: 1:500-1:1000
<b>Species reactivity</b>	Human, Mouse, Rat
<b>Form</b>	Liquid
<b>Storage buffer</b>	0.01M PBS, pH 7.4, 0.05% BSA, 50% Glycerol, 0.05% Sodium azide.
<b>Concentration</b>	1 mg/ml
<b>Purity</b>	>95% by SDS-PAGE.
<b>Clonality</b>	Monoclonal
<b>Isotype</b>	IgG
<b>Applications</b>	WB
<b>Target</b>	HCP, PTPN6, PTP1C, Hematopoietic cell protein-tyrosine phosphatase, SH-PTP1, Protein-tyrosine phosphatase SHP-1, Protein-tyrosine phosphatase 1C, Tyrosine-protein phosphatase non-receptor type 6, PTP-1C
<b>Purification</b>	Protein A/G purified from cell culture supernatant.
<b>Endotoxin level</b>	Please contact with the lab for this information.
<b>Accession</b>	P29350

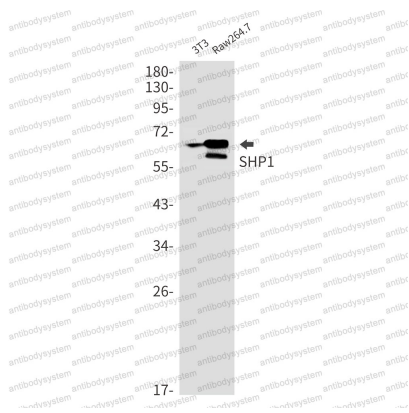
## Stability and Storage

Use a manual defrost freezer and avoid repeated freeze thaw cycles. Store at 4 °C for frequent use. Store at -20 °C for twelve months from the date of receipt.

## Note

For research use only.

## Data Image



Western blot

Western blot analysis of SHP1 in 3T3, Raw264.7 lysates using SHP1 antibody.



Western blot

Western blot analysis of SHP1 in Jurkat, C6, HeLa lysates using SHP1 antibody.