

Anti-PSB9/LMP2 Antibody (R1T43)

Summary

Catalog No.	RHD76202
Clone ID	R1T43
Host species	Rabbit
Tested applications	FCM: 1:20-1:100, IF: 1:50-1:200, WB: 1:1000-1:2000
Species reactivity	Human, Mouse, Rat
Form	Liquid
Storage buffer	0.01M PBS, pH 7.4, 0.05% BSA, 50% Glycerol, 0.05% Sodium azide.
Concentration	1 mg/ml
Purity	>95% by SDS-PAGE.
Clonality	Monoclonal
Isotype	IgG
Applications	FCM, IF, WB
Target	RING12, LMP2, PSMB6i, Low molecular mass protein 2, Proteasome subunit beta-1i, PSMB9, Proteasome subunit beta type-9, Multicatalytic endopeptidase complex chain 7, Macropain chain 7, Really interesting new gene 12 protein, Proteasome chain 7
Purification	Protein A/G purified from cell culture supernatant.
Endotoxin level	Please contact with the lab for this information.
Accession	P28065

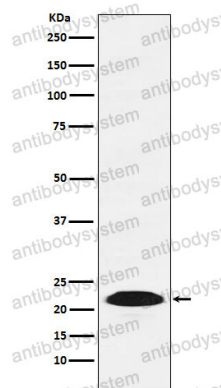
Stability and Storage

Use a manual defrost freezer and avoid repeated freeze thaw cycles. Store at 4 °C for frequent use. Store at -20 °C for twelve months from the date of receipt.

Note

For research use only.

Data Image



Western blot

Western blot analysis of Proteasome 20S LMP2 expression in A431 cell lysate.