

Anti-PSMB8 Antibody (R1T42)

Summary

Catalog No.	RHD76101
Clone ID	R1T42
Host species	Rabbit
Tested applications	IF: 1:50-1:200, IP: 1:20, WB: 1:500-1:1000
Species reactivity	Human, Mouse
Form	Liquid
Storage buffer	0.01M PBS, pH 7.4, 0.05% BSA, 50% Glycerol, 0.05% Sodium azide.
Concentration	1 mg/ml
Purity	>95% by SDS-PAGE.
Clonality	Monoclonal
Isotype	IgG
Applications	IF, IP, WB
Target	Low molecular mass protein 7, Macropain subunit C13, Really interesting new gene 10 protein, RING10, LMP7, Y2, Proteasome component C13, PSMB5i, Multicatalytic endopeptidase complex subunit C13, Proteasome subunit beta-5i, Proteasome subunit beta type-8, PSMB8
Purification	Protein A/G purified from cell culture supernatant.
Endotoxin level	Please contact with the lab for this information.
Accession	P28062

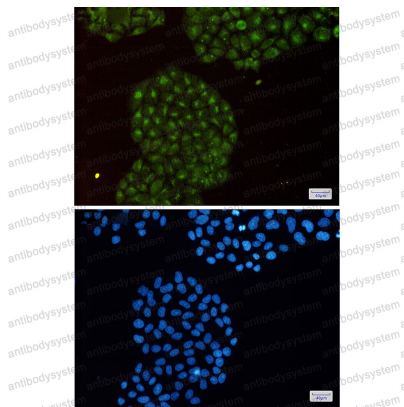
Stability and Storage

Use a manual defrost freezer and avoid repeated freeze thaw cycles. Store at 4 °C for frequent use. Store at -20 °C for twelve months from the date of receipt.

Note

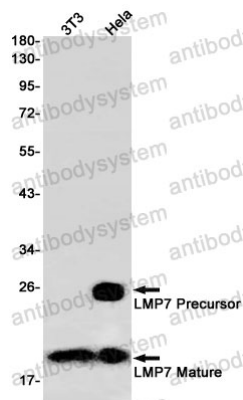
For research use only.

Data Image



Immunofluorescence

Immunocytochemistry analysis of LMP7(green) in HeLa using LMP7 antibody, and DAPI(blue)



Western blot

Western blot analysis of LMP7 in 3T3, HeLa lysates using Proteasome beta 8 antibody.