

Anti-MARK3 Antibody (R1T32)

Summary

Catalog No.	RHD73701
Clone ID	R1T32
Host species	Rabbit
Tested applications	FCM: 1:20-1:100, IF: 1:50-1:200, IP: 1:20-1:50, WB: 1:1000-1:2000
Species reactivity	Human, Mouse
Form	Liquid
Storage buffer	0.01M PBS, pH 7.4, 0.05% BSA, 50% Glycerol, 0.05% Sodium azide.
Concentration	1 mg/ml
Purity	>95% by SDS-PAGE.
Clonality	Monoclonal
Isotype	IgG
Applications	FCM, IF, IP, WB
Target	cTAK1, EMK-2, EMK2, C-TAK1, Serine/threonine-protein kinase p78, CTAK1, Protein kinase STK10, Cdc25C-associated protein kinase 1, Ser/Thr protein kinase PAR-1, MAP/microtubule affinity-regulating kinase 3, MARK3, ELKL motif kinase 2, Par-1a
Purification	Protein A/G purified from cell culture supernatant.
Endotoxin level	Please contact with the lab for this information.
Accession	P27448

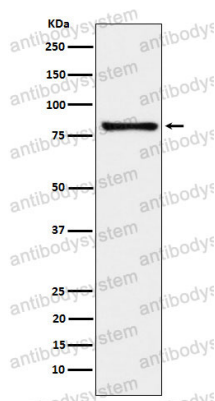
Stability and Storage

Use a manual defrost freezer and avoid repeated freeze thaw cycles. Store at 4 °C for frequent use. Store at -20 °C for twelve months from the date of receipt.

Note

For research use only.

Data Image



Western blot

Western blot analysis of MARK3 expression in K562 cell lysate.