

Anti-MAPK3 Antibody (R1T31)

Summary

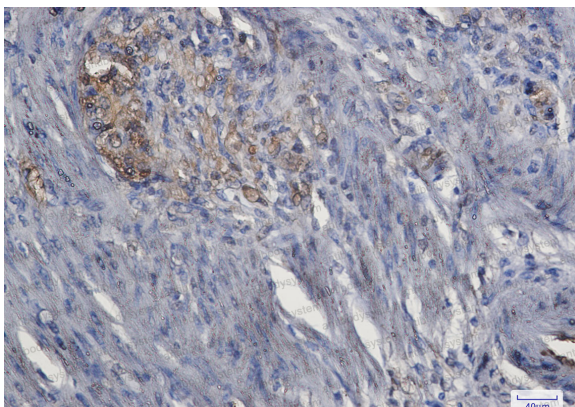
Catalog No.	RHD73608
Clone ID	R1T31
Host species	Rabbit
Tested applications	IHC: 1:50-1:100, IP: 1:20, WB: 1:500-1:1000
Species reactivity	Human
Form	Liquid
Storage buffer	0.01M PBS, pH 7.4, 0.05% BSA, 50% Glycerol, 0.05% Sodium azide.
Concentration	1 mg/ml
Purity	>95% by SDS-PAGE.
Clonality	Monoclonal
Isotype	IgG
Applications	IHC, IP, WB
Target	Microtubule-associated protein 2 kinase, p44-MAPK, Extracellular signal-regulated kinase 1, ERK1, MAPK3, MAP kinase isoform p44, Mitogen-activated protein kinase 3, ERK-1, PRKM3, Insulin-stimulated MAP2 kinase, p44-ERK1, MAPK 3, MAP kinase 3, ERT2
Purification	Protein A/G purified from cell culture supernatant.
Endotoxin level	Please contact with the lab for this information.
Accession	P27361

Stability and Storage

Use a manual defrost freezer and avoid repeated freeze thaw cycles. Store at 4 °C for frequent use. Store at -20 °C for twelve months from the date of receipt.

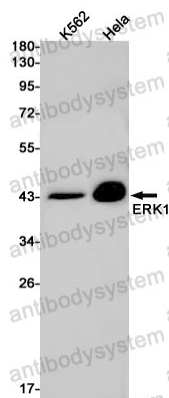
Note

For research use only.

Data Image

Immunohistochemical

Immunohistochemistry analysis of paraffin-embedded Human colon cancer using ERK1 antibody. High-pressure and temperature Sodium Citrate pH 6.0 was used for antigen retrieval.



Western blot

Western blot analysis of ERK1 in K562, HeLa lysates using ERK1 antibody.