

Anti-ERK1/2 Antibody (R1T30)

Summary

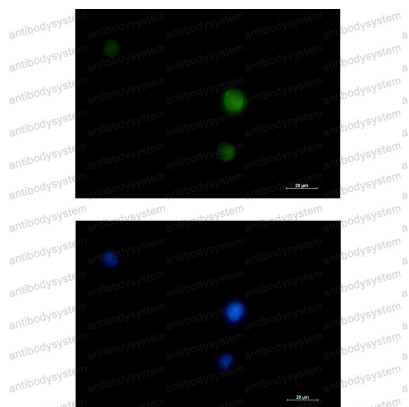
Catalog No.	RHD73607
Clone ID	R1T30
Host species	Rabbit
Tested applications	IF: 1:50-1:200, IP: 1:20, WB: 1:500-1:1000
Species reactivity	Human, Mouse, Rat
Form	Liquid
Storage buffer	0.01M PBS, pH 7.4, 0.05% BSA, 50% Glycerol, 0.05% Sodium azide.
Concentration	1 mg/ml
Purity	>95% by SDS-PAGE.
Clonality	Monoclonal
Isotype	IgG
Applications	IF, IP, WB
Target	Microtubule-associated protein 2 kinase, p44-MAPK, Extracellular signal-regulated kinase 1, ERK1, MAPK3, MAP kinase isoform p44, Mitogen-activated protein kinase 3, ERK-1, PRKM3, Insulin-stimulated MAP2 kinase, p44-ERK1, MAPK 3, MAP kinase 3, ERT2
Purification	Protein A/G purified from cell culture supernatant.
Endotoxin level	Please contact with the lab for this information.
Accession	P27361, P28482

Stability and Storage

Use a manual defrost freezer and avoid repeated freeze thaw cycles. Store at 4 °C for frequent use. Store at -20 °C for twelve months from the date of receipt.

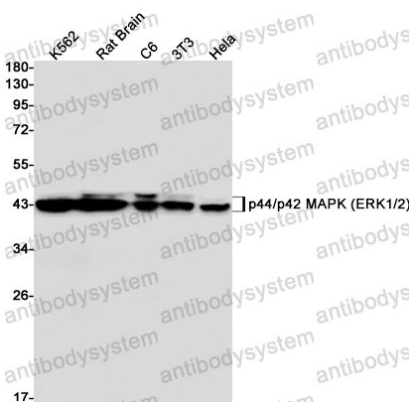
Note

For research use only.

Data Image

Immunofluorescence

Immunocytochemistry analysis of ERK1/2 (green) in K562 using ERK1/2 antibody, and DAPI(blue).



Western blot

Western blot analysis of p42 MAPK (ERK2) in K562, rat Brain, C6, 3T3, Hela lysates using p42 MAPK (ERK2) antibody.