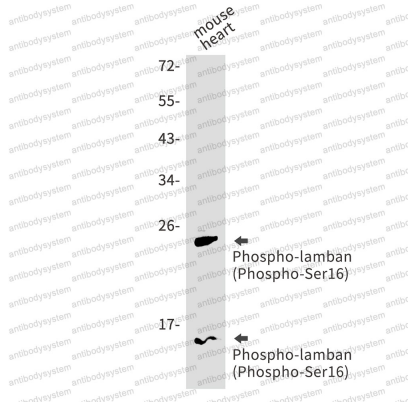


Anti-Phospho-PLN (Ser16) Antibody (R1T15)

Summary

Catalog No.	RHD71802
Clone ID	R1T15
Host species	Rabbit
Tested applications	WB: 1:500-1:1000
Species reactivity	Human, Mouse
Form	Liquid
Storage buffer	0.01M PBS, pH 7.4, 0.05% BSA, 50% Glycerol, 0.05% Sodium azide.
Concentration	1 mg/ml
Purity	>95% by SDS-PAGE.
Clonality	Monoclonal
Isotype	IgG
Applications	WB
Target	PLN, Cardiac phospholamban, PLB
Purification	Protein A/G purified from cell culture supernatant.
Endotoxin level	Please contact with the lab for this information.
Accession	P26678
Stability and Storage	Use a manual defrost freezer and avoid repeated freeze thaw cycles. Store at 4 °C for frequent use. Store at -20 °C for twelve months from the date of receipt.
Note	For research use only.

Data Image



Western blot

Western blot analysis of Phospho-lamban (Phospho-Ser16) in mouse heart lysates using Phospho-lamban (Ser16) antibody.