

# Anti-PTBP1 Antibody (R1T12)

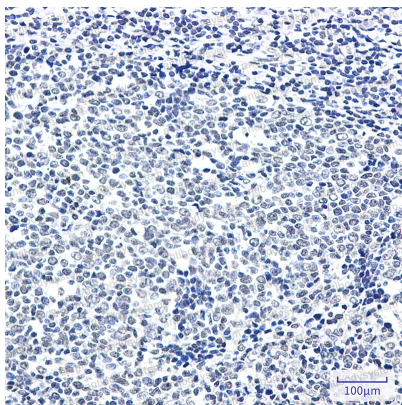
## Summary

---

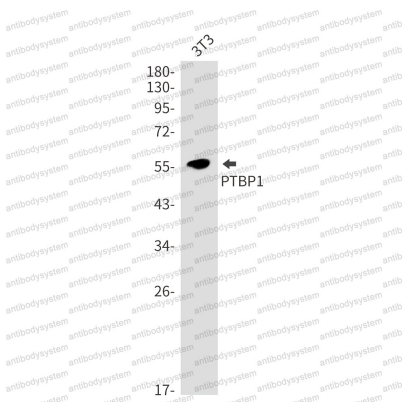
<b>Catalog No.</b>	RHD71301
<b>Clone ID</b>	R1T12
<b>Host species</b>	Rabbit
<b>Tested applications</b>	IHC: 1:50-1:100, WB: 1:500-1:1000
<b>Species reactivity</b>	Human, Mouse, Hamster
<b>Form</b>	Liquid
<b>Storage buffer</b>	0.01M PBS, pH 7.4, 0.05% BSA, 50% Glycerol, 0.05% Sodium azide.
<b>Concentration</b>	1 mg/ml
<b>Purity</b>	>95% by SDS-PAGE.
<b>Clonality</b>	Monoclonal
<b>Isotype</b>	IgG
<b>Applications</b>	IHC, WB
<b>Target</b>	PTB, Polypyrimidine tract-binding protein 1, 57 kDa RNA-binding protein PPTB-1, PTBP1, Heterogeneous nuclear ribonucleoprotein I, hnRNP I
<b>Purification</b>	Protein A/G purified from cell culture supernatant.
<b>Endotoxin level</b>	Please contact with the lab for this information.
<b>Accession</b>	P26599
<b>Stability and Storage</b>	Use a manual defrost freezer and avoid repeated freeze thaw cycles. Store at 4 °C for frequent use. Store at -20 °C for twelve months from the date of receipt.

**Note**

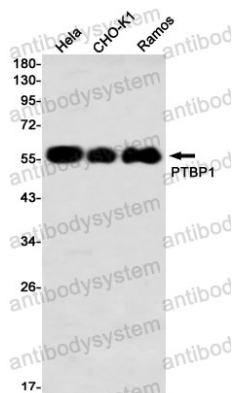
For research use only.

**Data Image****Immunohistochemical**

Immunohistochemistry analysis of paraffin-embedded Human tonsil using PTBP1 antibody. High-pressure and temperature Sodium Citrate pH 6.0 was used for antigen retrieval.

**Western blot**

Western blot analysis of PTBP1 in 3T3 lysates using PTBP1 antibody.



Western blot

Western blot analysis of PTBP1 in Hela, CHO-K1, Ramos lysates using PTBP1 antibody.