

Anti-S100A4 Antibody (R1T08)

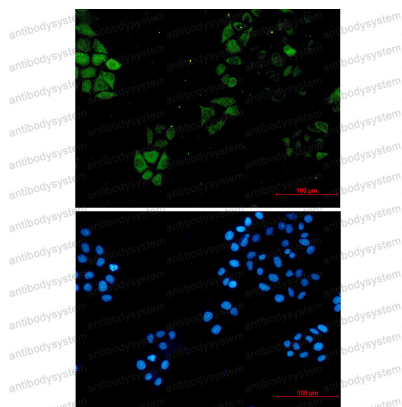
Summary

Catalog No.	RHD71001
Clone ID	R1T08
Host species	Rabbit
Tested applications	IF: 1:50-1:200, IHC: 1:50-1:100, IP: 1:20, WB: 1:500-1:1000
Species reactivity	Human
Form	Liquid
Storage buffer	0.01M PBS, pH 7.4, 0.05% BSA, 50% Glycerol, 0.05% Sodium azide.
Concentration	1 mg/ml
Purity	>95% by SDS-PAGE.
Clonality	Monoclonal
Isotype	IgG
Applications	IF, IHC, IP, WB
Target	S100A4, Protein S100-A4, S100 calcium-binding protein A4, Calvasculin, Protein Mts1, MTS1, CAPL, Placental calcium-binding protein, Metastasin
Purification	Protein A/G purified from cell culture supernatant.
Endotoxin level	Please contact with the lab for this information.
Accession	P26447
Stability and Storage	Use a manual defrost freezer and avoid repeated freeze thaw cycles. Store at 4 °C for frequent use. Store at -20 °C for twelve months from the date of receipt.

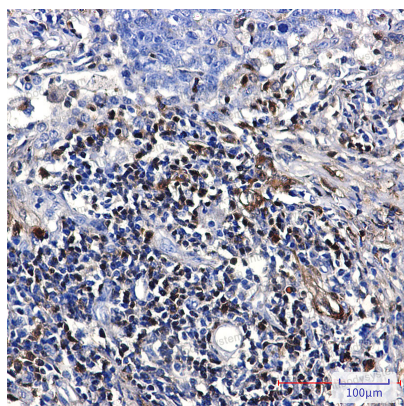
Note

For research use only.

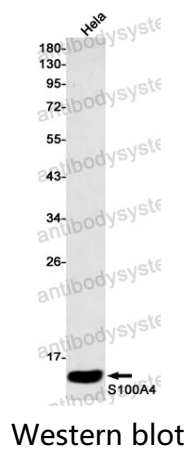
Data Image

**Immunofluorescence**

Immunocytochemistry analysis of S1A4 (green) in hela using S100A4 antibody, and DAPI (blue)

**Immunohistochemical**

Immunohistochemistry analysis of paraffin-embedded Human lung cancer using S100A4 antibody. High-pressure and temperature Sodium Citrate pH 6.0 was used for antigen retrieval.



Western blot analysis of S100A4 in HeLa lysates using S100A4 antibody.