

# Anti-Phospho-NFKBIA/IKB alpha (Ser36) Antibody (R1S95)

## Summary

---

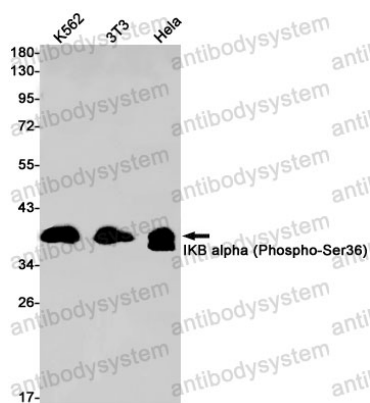
|                            |   |
|----------------------------|---|
| <b>Catalog No.</b>         | RHD69004  |
| <b>Clone ID</b>            | R1S95   |
| <b>Host species</b>        | Rabbit  |
| <b>Tested applications</b> | WB: 1:500-1:1000  |
| <b>Species reactivity</b>  | Human, Mouse  |
| <b>Form</b>                | Liquid  |
| <b>Storage buffer</b>      | 0.01M PBS, pH 7.4, 0.05% BSA, 50% Glycerol, 0.05% Sodium azide.   |
| <b>Concentration</b>       | 1 mg/ml   |
| <b>Purity</b>              | >95% by SDS-PAGE.   |
| <b>Clonality</b>           | Monoclonal  |
| <b>Isotype</b>             | IgG   |
| <b>Applications</b>        | WB  |
| <b>Target</b>              | NFKBI, Major histocompatibility complex enhancer-binding protein<br>MAD3, Ikb-alpha, IkappaBalpha, I-kappa-B-alpha, IKBA, NF-kappa-B<br>inhibitor alpha, NFKBIA, MAD3 |
| <b>Purification</b>        | Protein A/G purified from cell culture supernatant.   |
| <b>Endotoxin level</b>     | Please contact with the lab for this information.   |
| <b>Accession</b>           | P25963  |

**Stability and Storage**

Use a manual defrost freezer and avoid repeated freeze thaw cycles. Store at 4 °C for frequent use. Store at -20 °C for twelve months from the date of receipt.

**Note**

For research use only.

**Data Image**

Western blot

Western blot analysis of IKB alpha (Phospho-Ser36) in K562, 3T3, HeLa lysates using Phospho-IKB alpha (Ser36) antibody.