

Anti-Phospho-NFKBIA/IKB alpha (Ser32) Antibody (R1S94)

Summary

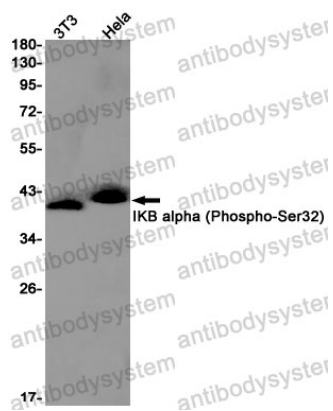
| | |
|----------------------------|---|
| Catalog No. | RHD69003 |
| Clone ID | R1S94 |
| Host species | Rabbit |
| Tested applications | IP: 1:20, WB: 1:500-1:1000 |
| Species reactivity | Human, Mouse |
| Form | Liquid |
| Storage buffer | 0.01M PBS, pH 7.4, 0.05% BSA, 50% Glycerol, 0.05% Sodium azide. |
| Concentration | 1 mg/ml |
| Purity | >95% by SDS-PAGE. |
| Clonality | Monoclonal |
| Isotype | IgG |
| Applications | IP, WB |
| Target | NFKBI, Major histocompatibility complex enhancer-binding protein MAD3, Ikb-alpha, IkappaBalpha, I-kappa-B-alpha, IKBA, NF-kappa-B inhibitor alpha, NFKBIA, MAD3 |
| Purification | Protein A/G purified from cell culture supernatant. |
| Endotoxin level | Please contact with the lab for this information. |
| Accession | P25963 |

Stability and Storage

Use a manual defrost freezer and avoid repeated freeze thaw cycles. Store at 4 °C for frequent use. Store at -20 °C for twelve months from the date of receipt.

Note

For research use only.

Data Image

Western blot

Western blot analysis of IKB alpha (Phospho-Ser32) in 3T3, Hela lysates using Phospho-IKB alpha (Ser32) antibody.