

Anti-S100P Antibody (R1S92)

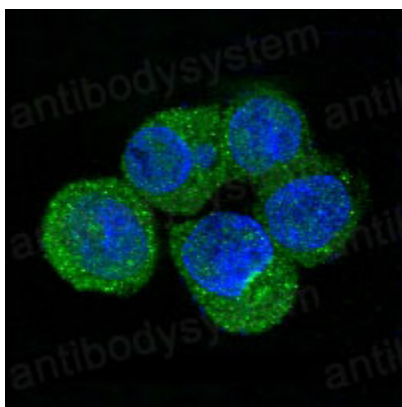
Summary

Catalog No.	RHD68501
Clone ID	R1S92
Host species	Rabbit
Tested applications	IF: 1:50-1:200, IHC: 1:100-1:200, IP: 1:20-1:50, WB: 1:1000-1:2000
Species reactivity	Human
Form	Liquid
Storage buffer	0.01M PBS, pH 7.4, 0.05% BSA, 50% Glycerol, 0.05% Sodium azide.
Concentration	1 mg/ml
Purity	>95% by SDS-PAGE.
Clonality	Monoclonal
Isotype	IgG
Applications	IF, IHC, IP, WB
Target	Protein S100-E, S100E, S100P, Protein S100-P, Migration-inducing gene 9 protein, S100 calcium-binding protein P, MIG9
Purification	Protein A/G purified from cell culture supernatant.
Endotoxin level	Please contact with the lab for this information.
Accession	P25815
Stability and Storage	Use a manual defrost freezer and avoid repeated freeze thaw cycles. Store at 4 °C for frequent use. Store at -20 °C for twelve months from the date of receipt.

Note

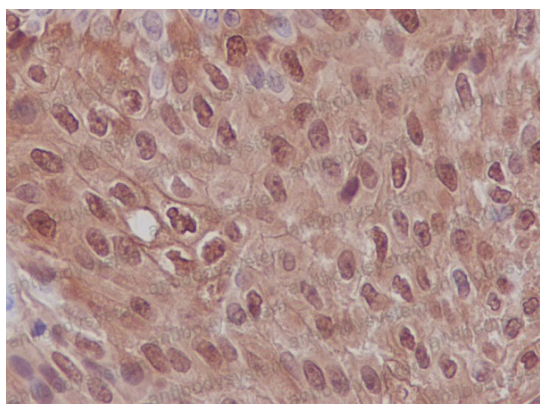
For research use only.

Data Image



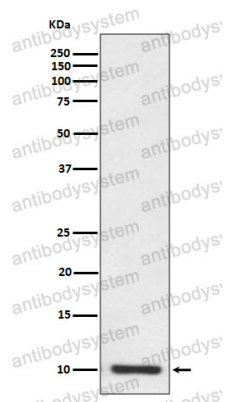
Immunofluorescence

Immunofluorescent analysis of SW480 cells, using S100P Antibody.



Immunohistochemical

Immunohistochemical analysis of paraffin-embedded human bladder carcinoma, using S100P Antibody.



Western blot

Western blot analysis of S100P expression in SW480 cell lysate.