

Anti-LMO2 Antibody (R1S91)

Summary

Catalog No.	RHD68303
Clone ID	R1S91
Host species	Rabbit
Tested applications	IP: 1:20, WB: 1:500-1:1000
Species reactivity	Human
Form	Liquid
Storage buffer	0.01M PBS, pH 7.4, 0.05% BSA, 50% Glycerol, 0.05% Sodium azide.
Concentration	1 mg/ml
Purity	>95% by SDS-PAGE.
Clonality	Monoclonal
Isotype	IgG
Applications	IP, WB
Target	RBTNL1, Rhombotin-2, T-cell translocation protein 2, LMO-2, Cysteine-rich protein TTG-2, TTG2, LIM domain only protein 2, LMO2, RHOM2, RBTN2
Purification	Protein A/G purified from cell culture supernatant.
Endotoxin level	Please contact with the lab for this information.
Accession	P25791

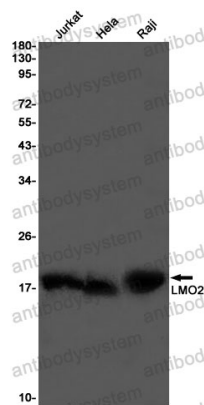
Stability and Storage

Use a manual defrost freezer and avoid repeated freeze thaw cycles. Store at 4 °C for frequent use. Store at -20 °C for twelve months from the date of receipt.

Note

For research use only.

Data Image



Western blot

Western blot analysis of LMO2 in Jurkat, Hela, Raji lysates using LMO2 antibody.