

Anti-Phospho-CDK2 (T160) + CDK1 (T161) Antibody (R1S69)

Summary

Catalog No.	RHD64703
Clone ID	R1S69
Host species	Rabbit
Tested applications	WB: 1:1000-1:2000
Species reactivity	Human
Form	Liquid
Storage buffer	0.01M PBS, pH 7.4, 0.05% BSA, 50% Glycerol, 0.05% Sodium azide.
Concentration	1 mg/ml
Purity	>95% by SDS-PAGE.
Clonality	Monoclonal
Isotype	IgG
Applications	WB
Target	CDK2, p33 protein kinase, Cyclin-dependent kinase 2, CDKN2, Cell division protein kinase 2
Purification	Protein A/G purified from cell culture supernatant.
Endotoxin level	Please contact with the lab for this information.
Accession	P24941, P06493

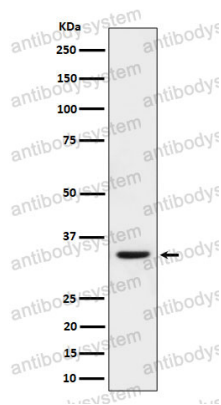
Stability and Storage

Use a manual defrost freezer and avoid repeated freeze thaw cycles. Store at 4 °C for frequent use. Store at -20 °C for twelve months from the date of receipt.

Note

For research use only.

Data Image



Western blot

Western blot analysis of Phospho-CDK2(T160)+CDK1(T161) expression in HeLa treated with nocodazole cell lysate.