

Anti-POLR2A Antibody (R1S68)

Summary

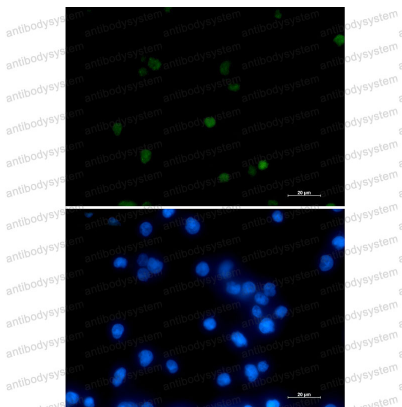
Catalog No.	RHD64606
Clone ID	R1S68
Host species	Rabbit
Tested applications	IF: 1:50-1:200, IHC: 1:50-1:100, IP: 1:20, WB: 1:500-1:1000
Species reactivity	Human
Form	Liquid
Storage buffer	0.01M PBS, pH 7.4, 0.05% BSA, 50% Glycerol, 0.05% Sodium azide.
Concentration	1 mg/ml
Purity	>95% by SDS-PAGE.
Clonality	Monoclonal
Isotype	IgG
Applications	IF, IHC, IP, WB
Target	DNA-directed RNA polymerase II subunit A, RNA-directed RNA polymerase II subunit RPB1, RNA polymerase II subunit B1, POLR2A, POLR2, DNA-directed RNA polymerase II subunit RPB1, DNA-directed RNA polymerase III largest subunit
Purification	Protein A/G purified from cell culture supernatant.
Endotoxin level	Please contact with the lab for this information.
Accession	P24928

Stability and Storage

Use a manual defrost freezer and avoid repeated freeze thaw cycles. Store at 4 °C for frequent use. Store at -20 °C for twelve months from the date of receipt.

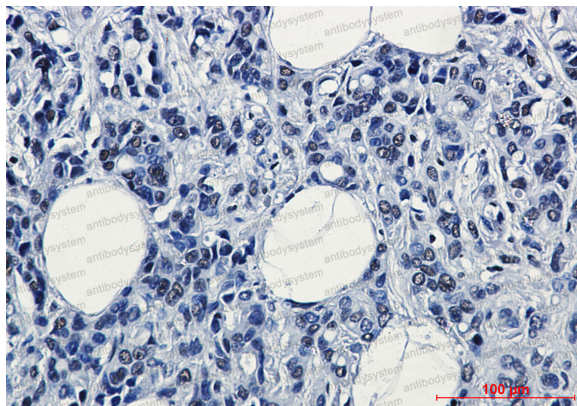
Note

For research use only.

Data Image

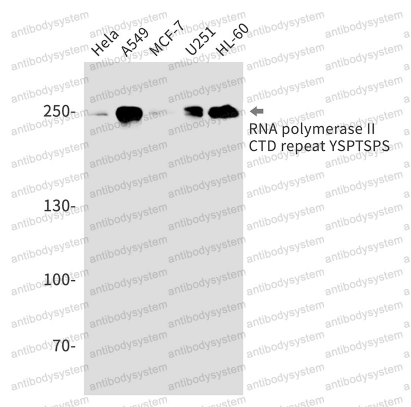
Immunofluorescence

Immunocytochemistry analysis of RNA Polymerase II Subunit B1 (green) in CEM using RNA Polymerase II Subunit B1 antibody, and DAPI (blue).



Immunohistochemical

Immunohistochemistry analysis of paraffin-embedded Human breast cancer tissue using RNA polymerase II CTD repeat YSPTSPS antibody. High-pressure and temperature Sodium Citrate pH 6.0 was used for antigen retrieval.



Western blot

Western blot analysis of RNA polymerase II CTD repeat YSPTSPS in HeLa, A549, MCF-7, U251, HL-60 lysates using RNA polymerase II CTD repeat YSPTSPS antibody.