

Anti-MYL9 Antibody (R1S66)

Summary

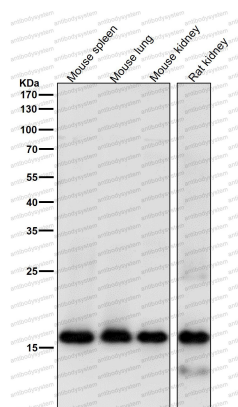
Catalog No.	RHD64102
Clone ID	R1S66
Host species	Rabbit
Tested applications	IHC: 1:100-1:200, IP: 1:20-1:50, WB: 1:1000-1:2000
Species reactivity	Human, Mouse, Rat
Form	Liquid
Storage buffer	0.01M PBS, pH 7.4, 0.05% BSA, 50% Glycerol, 0.05% Sodium azide.
Concentration	1 mg/ml
Purity	>95% by SDS-PAGE.
Clonality	Monoclonal
Isotype	IgG
Applications	IHC, IP, WB
Target	Myosin regulatory light chain MRLC1, 20 kDa myosin light chain, Myosin regulatory light chain 2, smooth muscle isoform, MYRL2, MYL9, MLC-2C, LC20, Myosin regulatory light chain 9, MLC2, MRLC1, Myosin RLC, Myosin regulatory light polypeptide 9
Purification	Protein A/G purified from cell culture supernatant.
Endotoxin level	Please contact with the lab for this information.
Accession	P24844

Stability and Storage

Use a manual defrost freezer and avoid repeated freeze thaw cycles. Store at 4 °C for frequent use. Store at -20 °C for twelve months from the date of receipt.

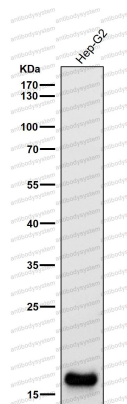
Note

For research use only.

Data Image

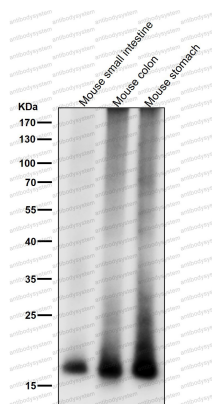
Western blot

All lanes use the Antibody at 1:1k dilution for 1 hour at room temperature.



Western blot

All lanes use the Antibody at 1:1k dilution for 1 hour at room temperature.



Western blot

All lanes use the Antibody at 1:1k dilution for 1 hour at room temperature.