

Anti-MMP11 Antibody (R1S56)

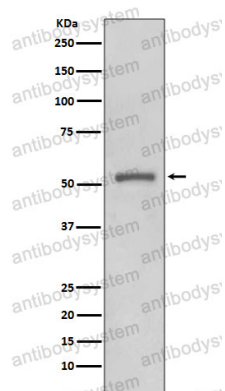
Summary

| | |
|------------------------------|---|
| Catalog No. | RHD62101 |
| Clone ID | R1S56 |
| Host species | Rabbit |
| Tested applications | IF: 1:50-1:200, IHC: 1:100-1:200, WB: 1:1000-1:2000 |
| Species reactivity | Human, Mouse, Rat |
| Form | Liquid |
| Storage buffer | 0.01M PBS, pH 7.4, 0.05% BSA, 50% Glycerol, 0.05% Sodium azide. |
| Concentration | 1 mg/ml |
| Purity | >95% by SDS-PAGE. |
| Clonality | Monoclonal |
| Isotype | IgG |
| Applications | IF, IHC, WB |
| Target | Matrix metalloproteinase-11, MMP-11, STMY3, Stromelysin-3, ST3, SL-3, MMP11 |
| Purification | Protein A/G purified from cell culture supernatant. |
| Endotoxin level | Please contact with the lab for this information. |
| Accession | P24347 |
| Stability and Storage | Use a manual defrost freezer and avoid repeated freeze thaw cycles. Store at 4 °C for frequent use. Store at -20 °C for twelve months from the date of receipt. |

Note

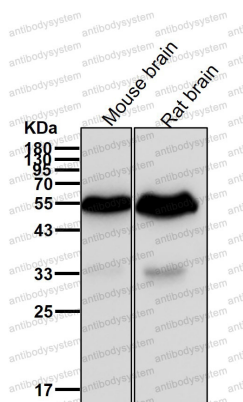
For research use only.

Data Image



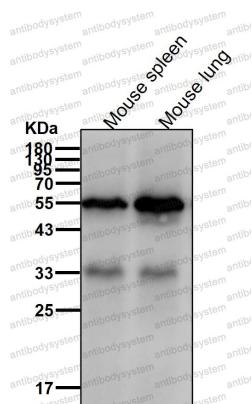
Western blot

Western blot analysis of MMP11 expression in MCF-7 cell lysate.



Western blot

All lanes use the Antibody at 1:1K dilution for 1 hour at room temperature.



Western blot

All lanes use the Antibody at 1:1K dilution for 1 hour at room temperature.