

Anti-LORICRIN Antibody (R1S40)

Summary

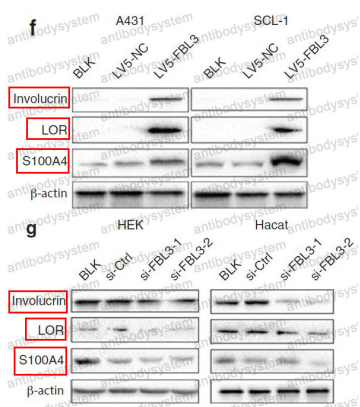
Catalog No.	RHD58501
Clone ID	R1S40
Host species	Rabbit
Tested applications	IHC: 1:100-1:200, WB: 1:1000-1:2000
Species reactivity	Human
Form	Liquid
Storage buffer	0.01M PBS, pH 7.4, 0.05% BSA, 50% Glycerol, 0.05% Sodium azide.
Concentration	1 mg/ml
Purity	>95% by SDS-PAGE.
Clonality	Monoclonal
Isotype	IgG
Applications	IHC, WB
Target	LRN, LOR, Loricrin, LORICRIN
Purification	Protein A/G purified from cell culture supernatant.
Endotoxin level	Please contact with the lab for this information.
Accession	P23490
Stability and Storage	Use a manual defrost freezer and avoid repeated freeze thaw cycles. Store at 4 °C for frequent use. Store at -20 °C for twelve months from the date of receipt.
Note	For research use only.

Data Image



Western blot

Western blot analysis of Loricrin expression in Human skin cell lysate.



Western blot

Fibulin-3 has anti-tumorigenic activities in cutaneous squamous cell carcinoma. -Journal of Investigative Dermatology