

Anti-S6K1/RPS6KB1 Antibody (R1S37)

Summary

Catalog No.	RHD57801
Clone ID	R1S37
Host species	Rabbit
Tested applications	WB: 1:500-1:1000
Species reactivity	Human, Rat
Form	Liquid
Storage buffer	0.01M PBS, pH 7.4, 0.05% BSA, 50% Glycerol, 0.05% Sodium azide.
Concentration	1 mg/ml
Purity	>95% by SDS-PAGE.
Clonality	Monoclonal
Isotype	IgG
Applications	WB
Target	S6K-beta-1, 70 kDa ribosomal protein S6 kinase 1, p70 S6KA, p70-S6K 1, S6K1, Serine/threonine-protein kinase 14A, p70 ribosomal S6 kinase alpha, p70 S6 kinase alpha, STK14A, RPS6KB1, Ribosomal protein S6 kinase I, p70 S6K-alpha, P70S6K1, Ribosomal protein S6 kinase beta-1
Purification	Protein A/G purified from cell culture supernatant.
Endotoxin level	Please contact with the lab for this information.
Accession	P23443

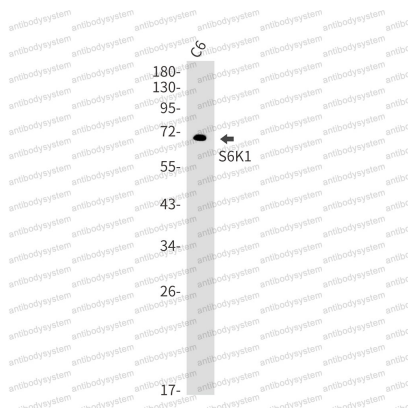
Stability and Storage

Use a manual defrost freezer and avoid repeated freeze thaw cycles. Store at 4 °C for frequent use. Store at -20 °C for twelve months from the date of receipt.

Note

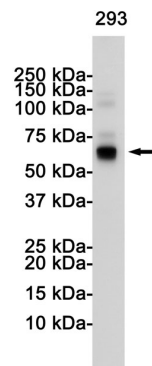
For research use only.

Data Image



Western blot

Western blot analysis of S6K1 in C6 muscle lysates using S6K1 antibody.



Western blot

Western blot analysis of S6K1 in 293 lysates using S6K1 antibody.