

# Anti-S6K1/RPS6KB1 Antibody (R1S36)

## Summary

---

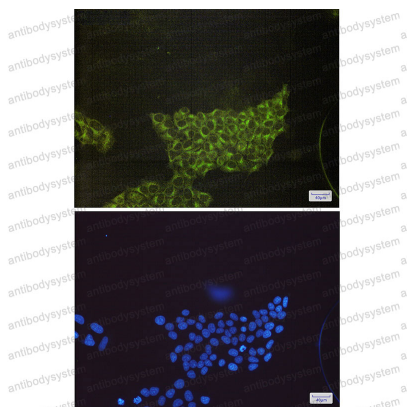
<b>Catalog No.</b>	RHD57802
<b>Clone ID</b>	R1S36
<b>Host species</b>	Rabbit
<b>Tested applications</b>	IF: 1:50-1:200, IP: 1:20, WB: 1:500-1:1000
<b>Species reactivity</b>	Human, Mouse, Rat
<b>Form</b>	Liquid
<b>Storage buffer</b>	0.01M PBS, pH 7.4, 0.05% BSA, 50% Glycerol, 0.05% Sodium azide.
<b>Concentration</b>	1 mg/ml
<b>Purity</b>	>95% by SDS-PAGE.
<b>Clonality</b>	Monoclonal
<b>Isotype</b>	IgG
<b>Applications</b>	IF, IP, WB
<b>Target</b>	S6K-beta-1, 70 kDa ribosomal protein S6 kinase 1, p70 S6KA, p70-S6K 1, S6K1, Serine/threonine-protein kinase 14A, p70 ribosomal S6 kinase alpha, p70 S6 kinase alpha, STK14A, RPS6KB1, Ribosomal protein S6 kinase I, p70 S6K-alpha, P70S6K1, Ribosomal protein S6 kinase beta-1
<b>Purification</b>	Protein A/G purified from cell culture supernatant.
<b>Endotoxin level</b>	Please contact with the lab for this information.
<b>Accession</b>	P23443

**Stability and Storage**

Use a manual defrost freezer and avoid repeated freeze thaw cycles. Store at 4 °C for frequent use. Store at -20 °C for twelve months from the date of receipt.

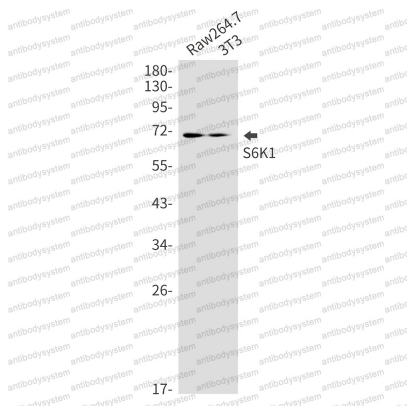
**Note**

For research use only.

**Data Image**

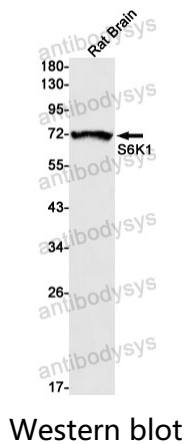
**Immunohistochemical**

Immunocytochemistry analysis of S6K1(green) in Hela using S6K1 antibody, and DAPI(blue)



**Western blot**

Western blot analysis of S6K1 in Raw264.7, 3T3 lysates using S6K1 antibody.



Western blot analysis of S6K1 in rat Brain lysates using S6K1 antibody.