

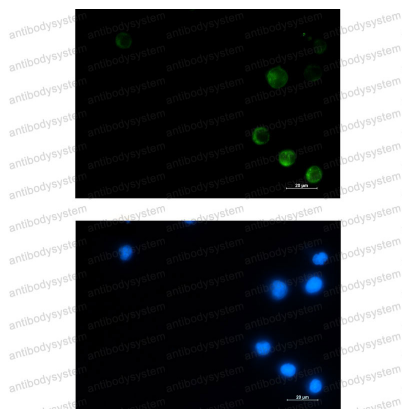
Anti-ME2 Antibody (R1S32)

Summary

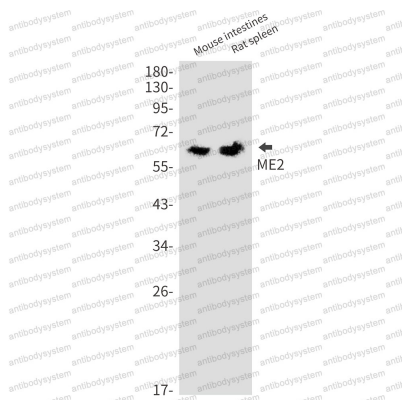
Catalog No.	RHD56901
Clone ID	R1S32
Host species	Rabbit
Tested applications	IF: 1:50-1:200, WB: 1:500-1:1000
Species reactivity	Human, Mouse, Rat
Form	Liquid
Storage buffer	0.01M PBS, pH 7.4, 0.05% BSA, 50% Glycerol, 0.05% Sodium azide.
Concentration	1 mg/ml
Purity	>95% by SDS-PAGE.
Clonality	Monoclonal
Isotype	IgG
Applications	IF, WB
Target	ME2, NAD-dependent malic enzyme, mitochondrial, Malic enzyme 2, NAD-ME
Purification	Protein A/G purified from cell culture supernatant.
Endotoxin level	Please contact with the lab for this information.
Accession	P23368
Stability and Storage	Use a manual defrost freezer and avoid repeated freeze thaw cycles. Store at 4 °C for frequent use. Store at -20 °C for twelve months from the date of receipt.

Note

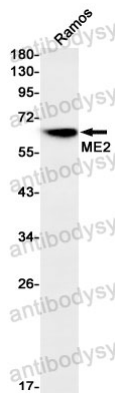
For research use only.

Data Image**Immunofluorescence**

Immunocytochemistry analysis of ME2 (green) in Jurkat using ME2 antibody, and DAPI (blue).

**Western blot**

Western blot analysis of ME2 in mouse intestines, rat spleen lysates using ME2 antibody.



Western blot

Western blot analysis of ME2 in Ramos lysates using ME2 antibody