

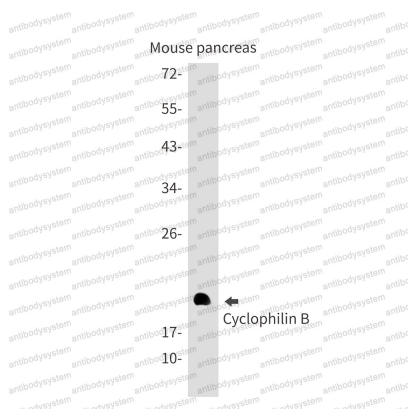
Anti-PPIB Antibody (R1S31)

Summary

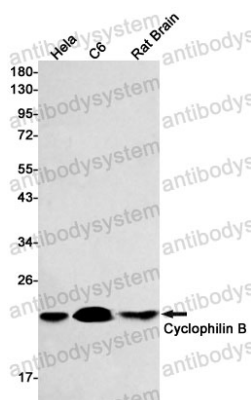
Catalog No.	RHD56502
Clone ID	R1S31
Host species	Rabbit
Tested applications	WB: 1:500-1:1000
Species reactivity	Human, Mouse, Rat
Form	Liquid
Storage buffer	0.01M PBS, pH 7.4, 0.05% BSA, 50% Glycerol, 0.05% Sodium azide.
Concentration	1 mg/ml
Purity	>95% by SDS-PAGE.
Clonality	Monoclonal
Isotype	IgG
Applications	WB
Target	Cyclophilin B, S-cyclophilin, Rotamase B, PPIase B, CYP-S1, Peptidyl-prolyl cis-trans isomerase B, PPIB, SCYLP, CYPB
Purification	Protein A/G purified from cell culture supernatant.
Endotoxin level	Please contact with the lab for this information.
Accession	P23284
Stability and Storage	Use a manual defrost freezer and avoid repeated freeze thaw cycles. Store at 4 °C for frequent use. Store at -20 °C for twelve months from the date of receipt.

Note

For research use only.

Data Image**Western blot**

Western blot analysis of Cyclophilin B in mouse pancreas lysates using Cyclophilin B antibody.

**Western blot**

Western blot analysis of Cyclophilin B in HeLa, C6, rat Brain lysates using Cyclophilin B antibody.