

Anti-SFPQ Antibody (R1S29)

Summary

Catalog No.	RHD56101
Clone ID	R1S29
Host species	Rabbit
Tested applications	IF: 1:50-1:200, IHC: 1:50-1:100, WB: 1:500-1:1000
Species reactivity	Human, Mouse, Rat
Form	Liquid
Storage buffer	0.01M PBS, pH 7.4, 0.05% BSA, 50% Glycerol, 0.05% Sodium azide.
Concentration	1 mg/ml
Purity	>95% by SDS-PAGE.
Clonality	Monoclonal
Isotype	IgG
Applications	IF, IHC, WB
Target	Splicing factor, proline- and glutamine-rich, PTB-associated-splicing factor, SFPQ, DNA-binding p52/p100 complex, 100 kDa subunit, Polypyrimidine tract-binding protein-associated-splicing factor, PSF, hPOMp100, 100 kDa DNA-pairing protein
Purification	Protein A/G purified from cell culture supernatant.
Endotoxin level	Please contact with the lab for this information.
Accession	P23246

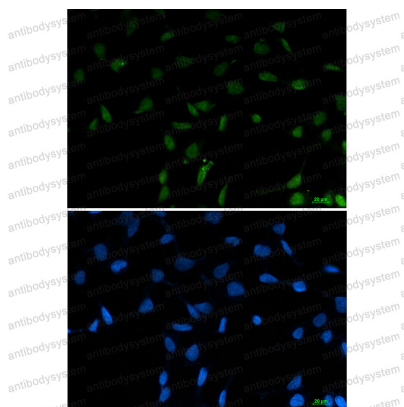
Stability and Storage

Use a manual defrost freezer and avoid repeated freeze thaw cycles. Store at 4 °C for frequent use. Store at -20 °C for twelve months from the date of receipt.

Note

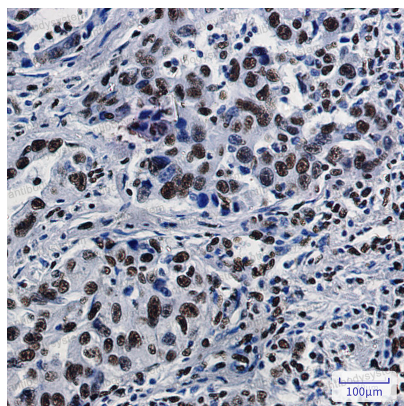
For research use only.

Data Image



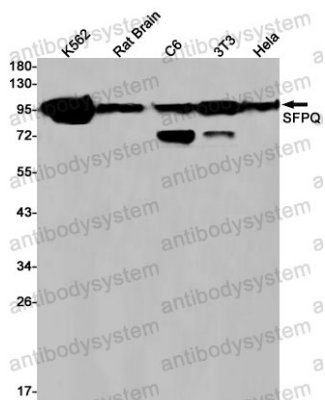
Immunofluorescence

Immunocytochemistry analysis of SFPQ (green) in 293T using SFPQ antibody, and DAPI (blue).



Immunohistochemical

Immunohistochemistry analysis of paraffin-embedded Human lung cancer tissue using SFPQ antibody. High-pressure and temperature Sodium Citrate pH 6.0 was used for antigen retrieval.



Western blot

Western blot analysis of SFPQ in K562, rat Brain, C6, 3T3, HeLa lysates using SFPQ antibody.